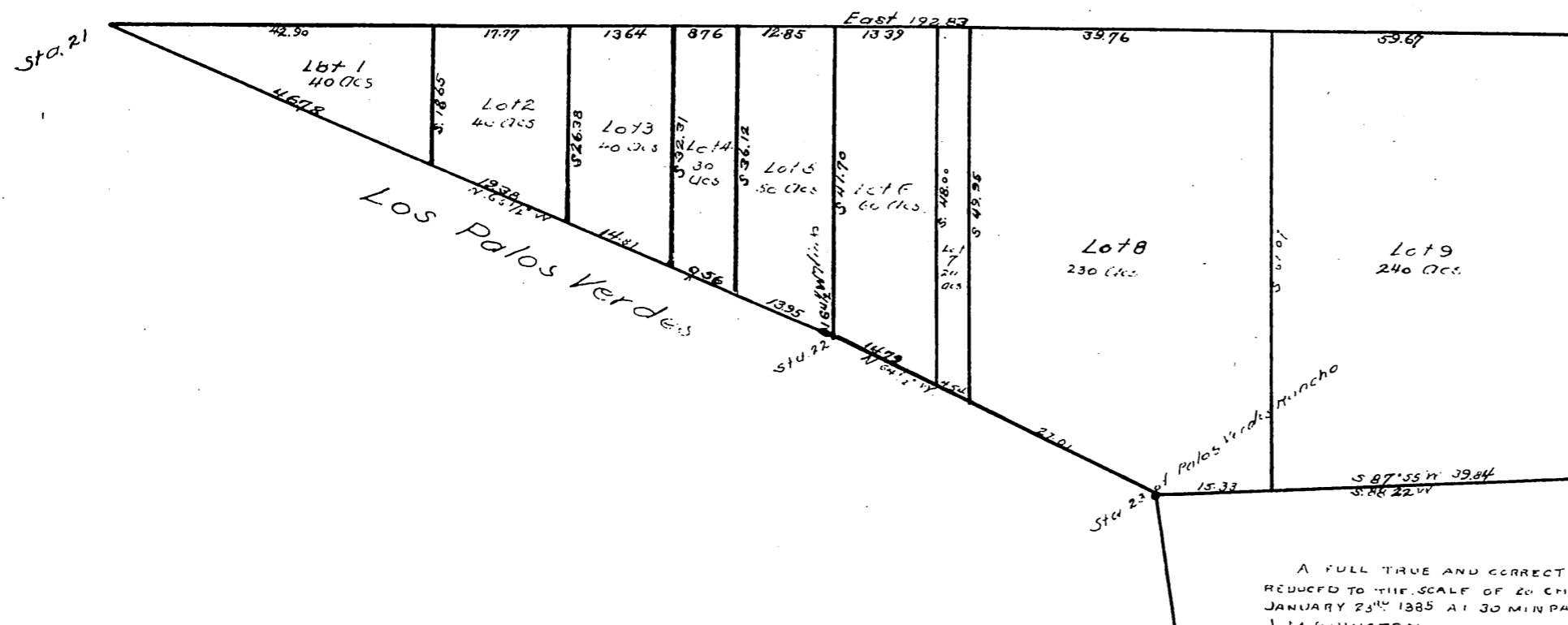


MAP
of the
750 ACRE TRACT OF
MARIA MACHADO DE ROCHA
 IN THE
RANCHO SAN PEDRO, COUNTY OF LOS ANGELES CAL.
 SUBDIVIDED SEPT 1834 AT REQUEST OF SEPULVEDA
 by *E.T. Wright.*
 SCALE 16 CHS TO ONE INCH



A FULL TRUE AND CORRECT COPY OF THE ORIGINAL
 REDUCED TO THE SCALE OF 20 CHS TO ONE INCH RECORDED
 JANUARY 23RD 1885 AT 30 MIN PAST 3 P.M. AT REQUEST OF
 J. H. FULINGTON

Chas & Yellus COUNTY RECORDER