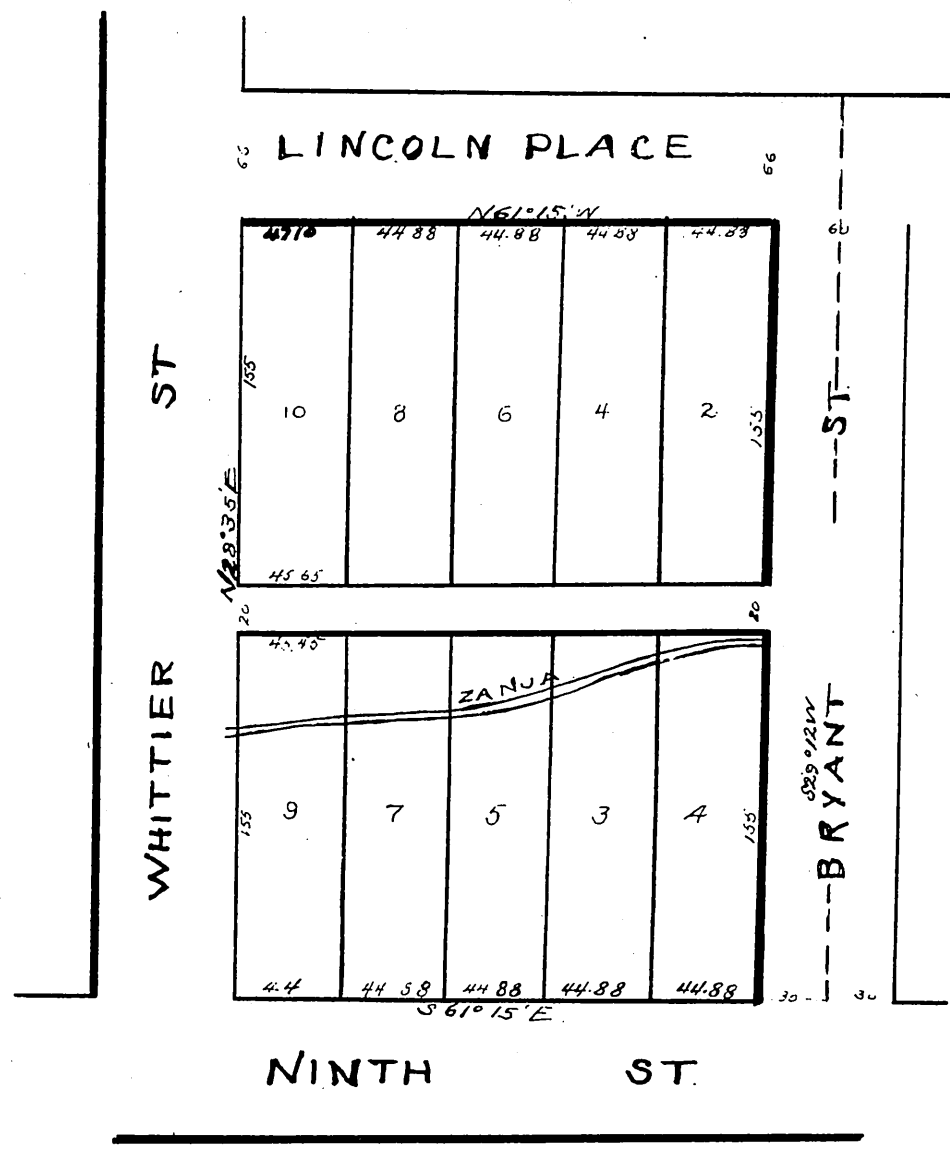
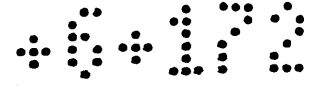


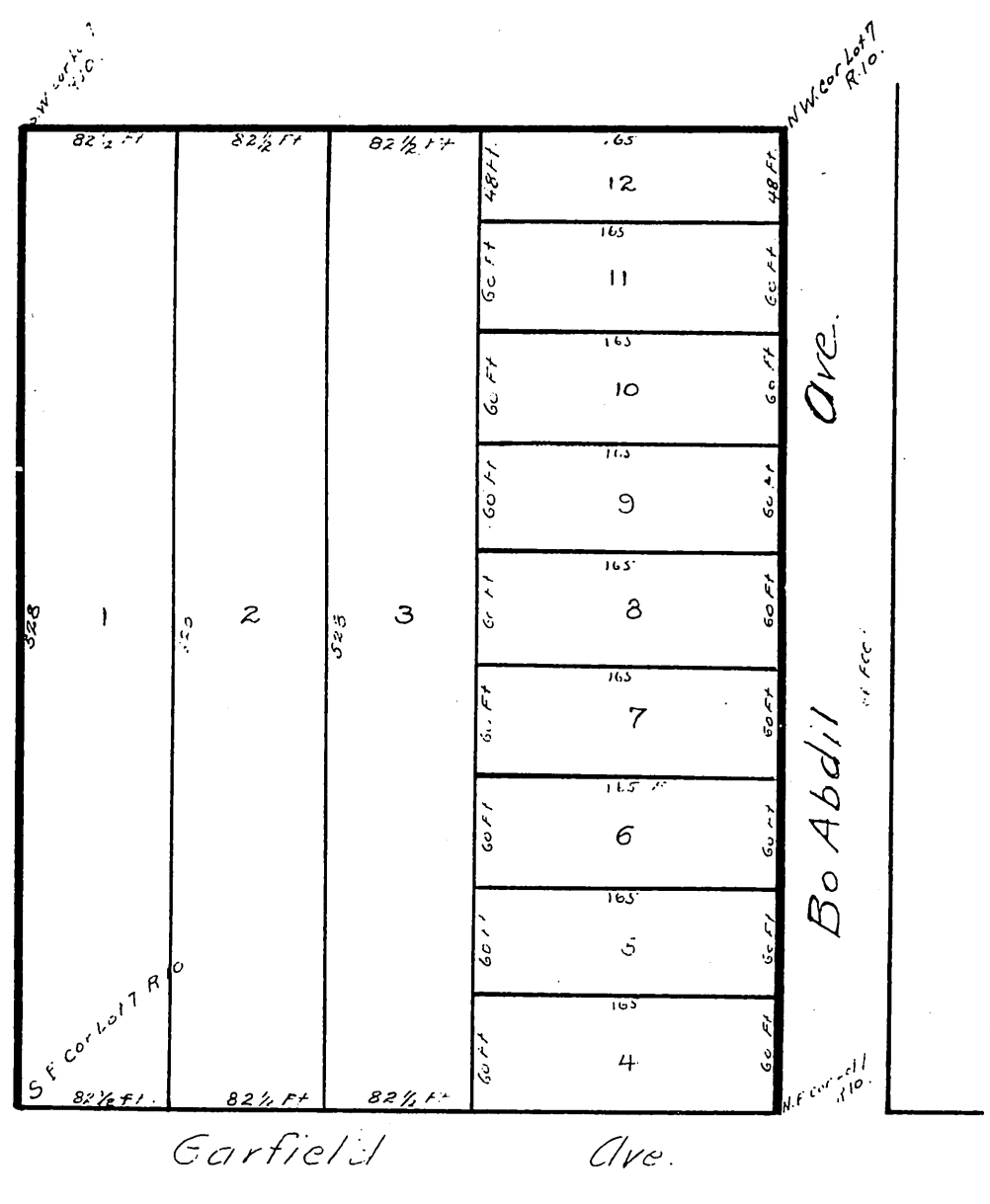
MR-6-172

Map of U Neils  
Subdivision on  
Ninth Street  
Scale 40 Feet to one inch.



Full true and correct copy of the original  
returned to scale of 80 ft to one inch recorded  
at request of John O Neil Jan'y 15 1885  
at 5 min past 11 A.M.  
Chas E Miles Recorder  
By W. B. Pruchard Deputy

H.W. Startons Subdivision  
Lot 7 Range 10  
of the Alhambra Addition Tract in Los Angeles Co., Cal.  
A.D. 1885.  
Scale 1/2 ch. one inch



Full true and correct copy of the original  
returned to scale of 160 ft to one inch recorded  
at request of H.W. Starton Jan'y 22 1885  
at 50 min past 11 A.M.  
Chas E Miles Recorder  
By W. B. Pruchard Deputy