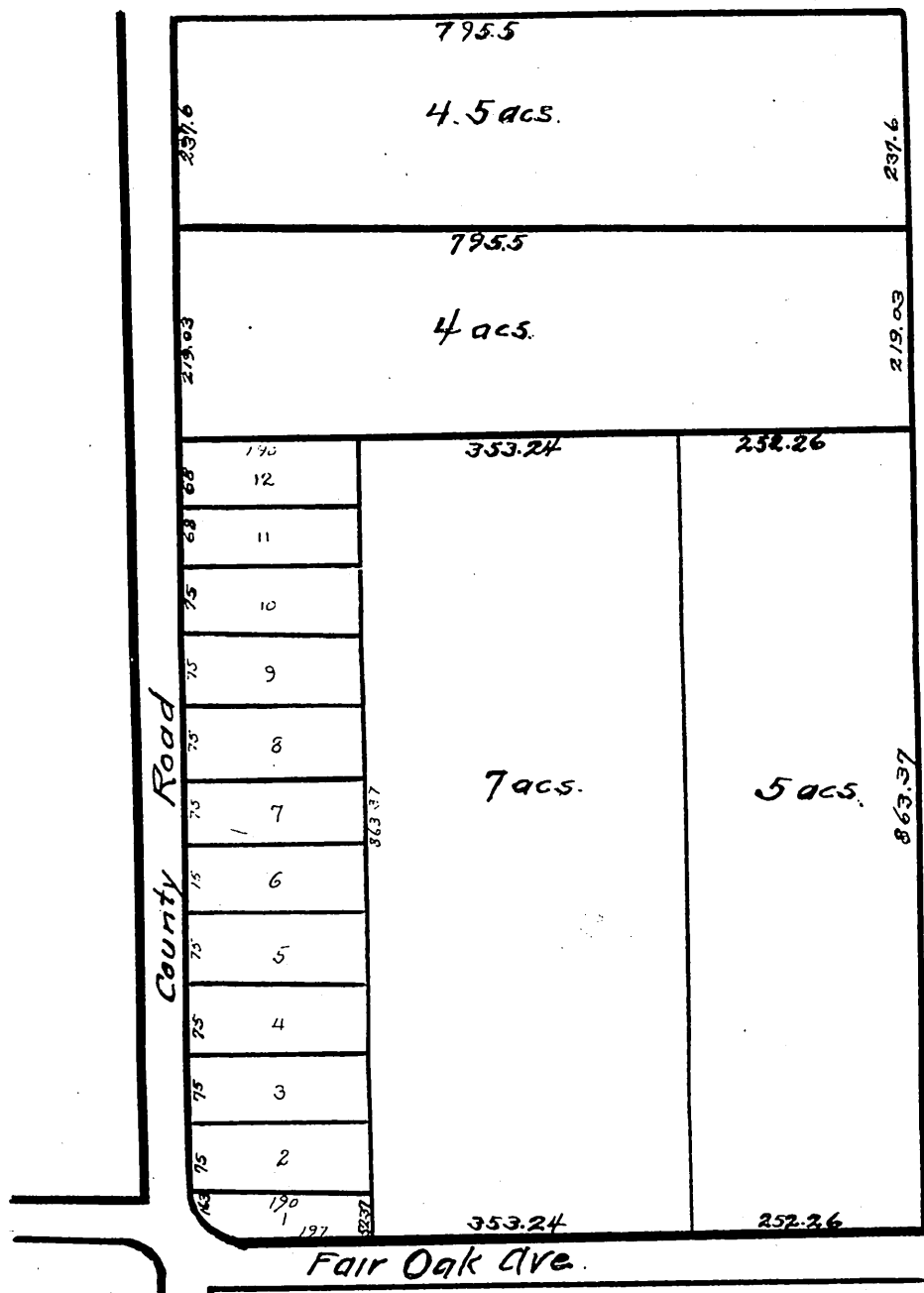


MR-6-180



A full, true and correct copy of the original map recorded at request of E. Turner Feb 3, 1885 at 14 min past 10 (111) Chas E. Mules Recorder
 W. B. Richard Deputy

Plat of Subdivision
 OF
 E. Turner's Tract.
 Pasadena Cal.

Surveyed by Willicl Thomson.
 Scale 200 ft. to 1 in. Jan 17, 1885.