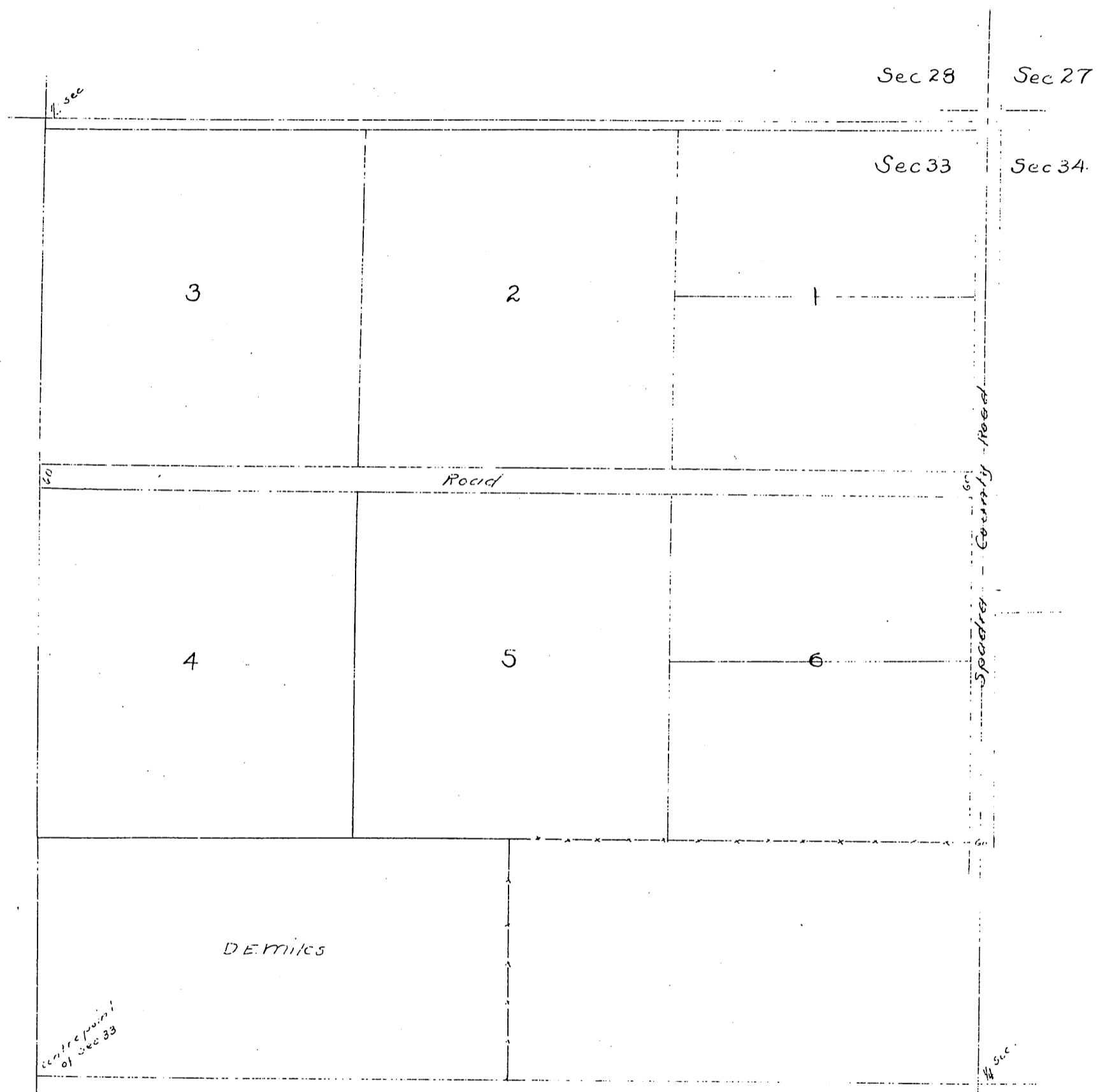


MR-6-182

Plat
 of
 Miles Bros Subdivision
 of a part of
 the N.E. 1/4 of Sec 33 T.3 S. R.10 W.
 scale 5 chs to 1 inch.



Note - The land herein subdivided is described as follows
 N 1/2 of N.E. 1/4 and the S 1/2 of N.E. 1/4 of sec 33 T.3 S
 R 10 W.

A full, true and correct copy of the original, recorded at request
 of Miles Bros February 5, 1885 at 12 o'clock PM
 Chas E. Miles, Recorder
 W. B. Pichard, Deputy.