

MR-6-193

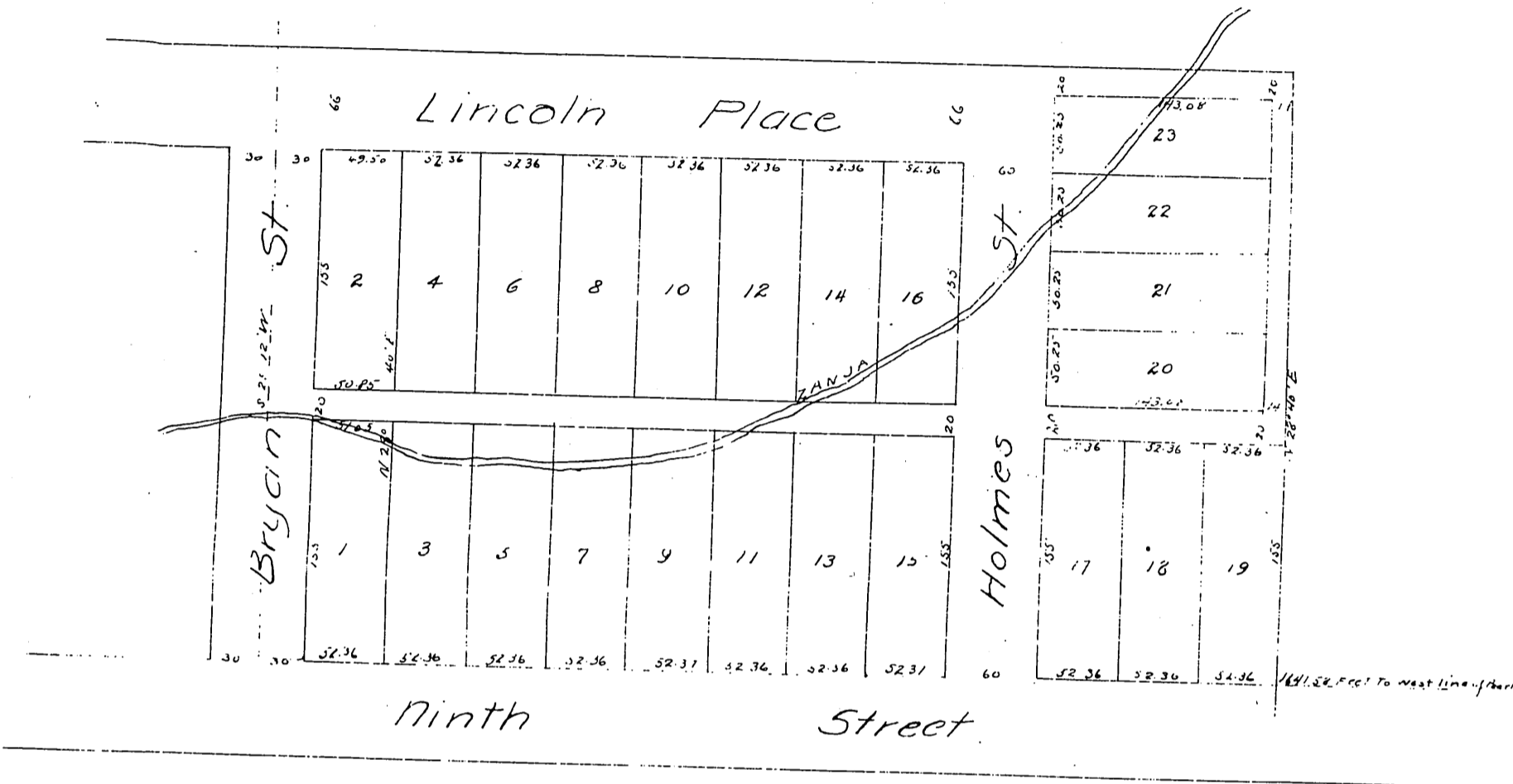
MAP of the KENNEDY TRACT

Los Angeles, Cal.

SURVEYED MAY
1884

by E. T. Wright.

SCALE 60 FT PER INCH



A full, true and correct copy of the original
reduced to the scale of 100 feet per inch recorded
July 14th 1885 at 59 min past 2 P.M. at request of
E. W. Jones

Chas E. Miles Co Recorder