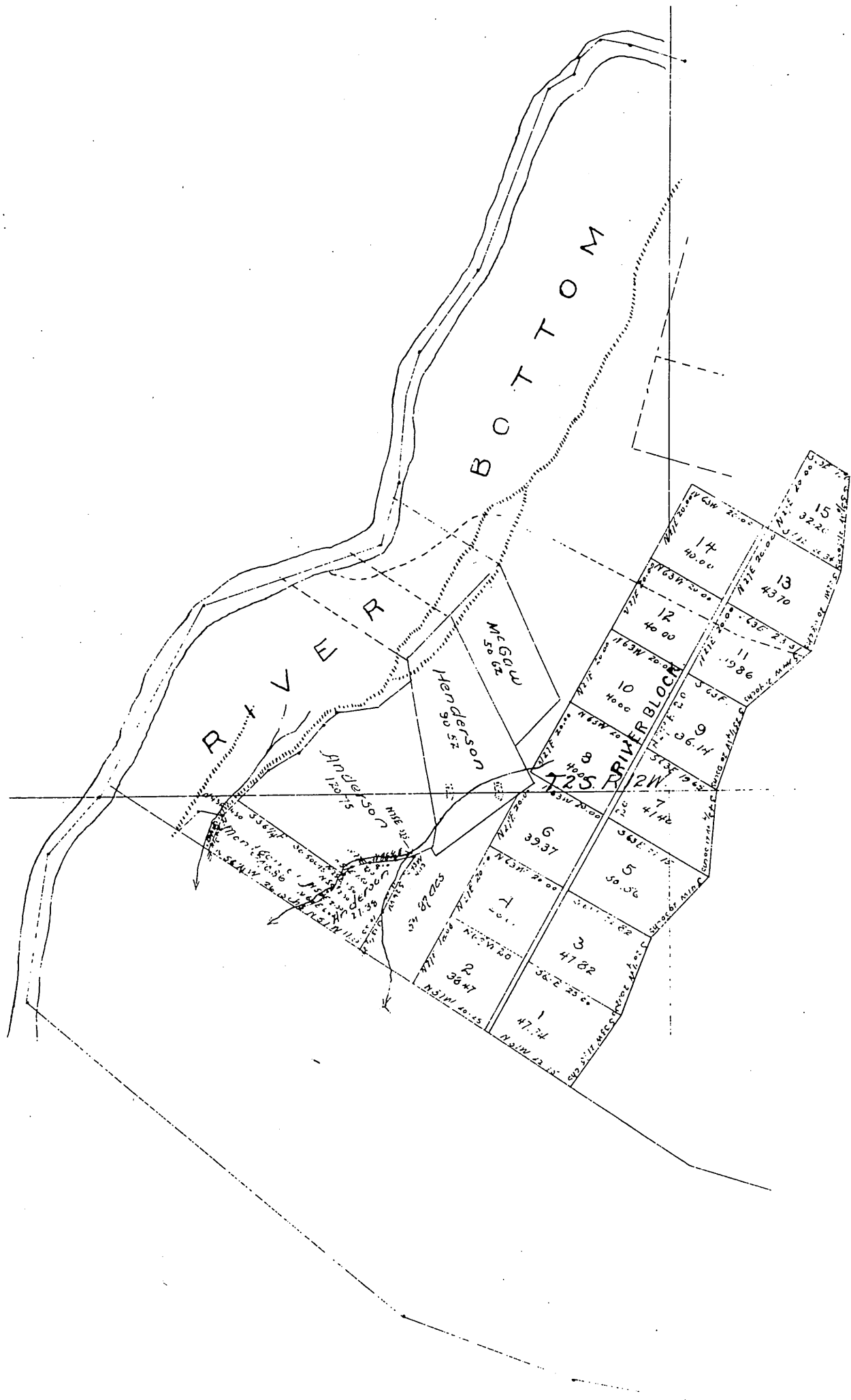


MR-6-204

Subdivision
OF
Rancho
Paso de Bartolo
finally confirmed to
Don Pio Pico

Surveyed by E. Hudley
October and November
1870

True Courses
Scale 10 chs per inch Var 14° E.

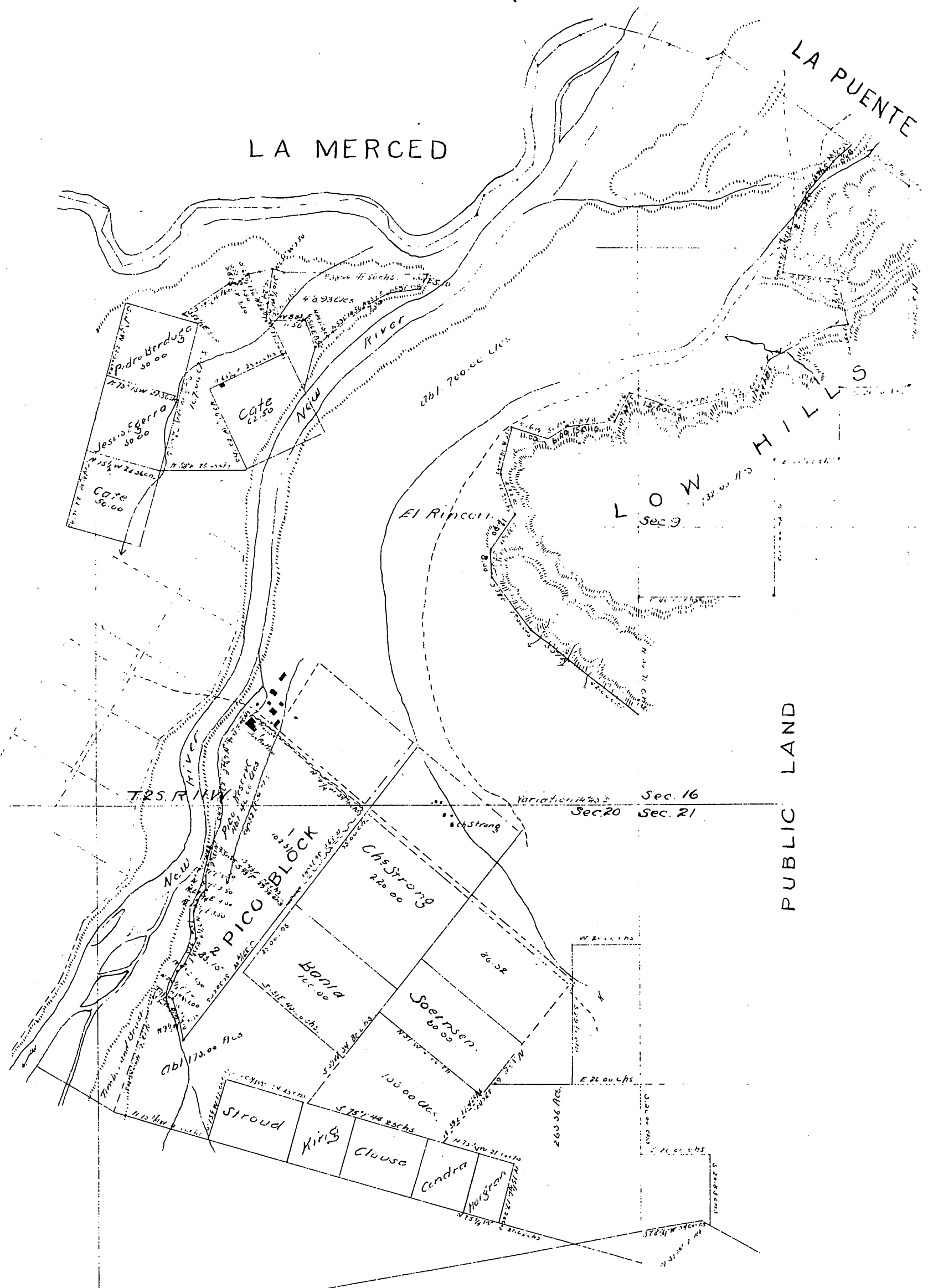


MR-6-205

POTRERO DE F. LUGO

LA PUENTE

LA MERCED



A full true and correct copy of the original
 reduced to the scale of 30 chains to one inch
 recorded February 11th 1835 at 20 min past
 10 AM at request of M.F. Tyler.

Chas E Miles Co. Recorder