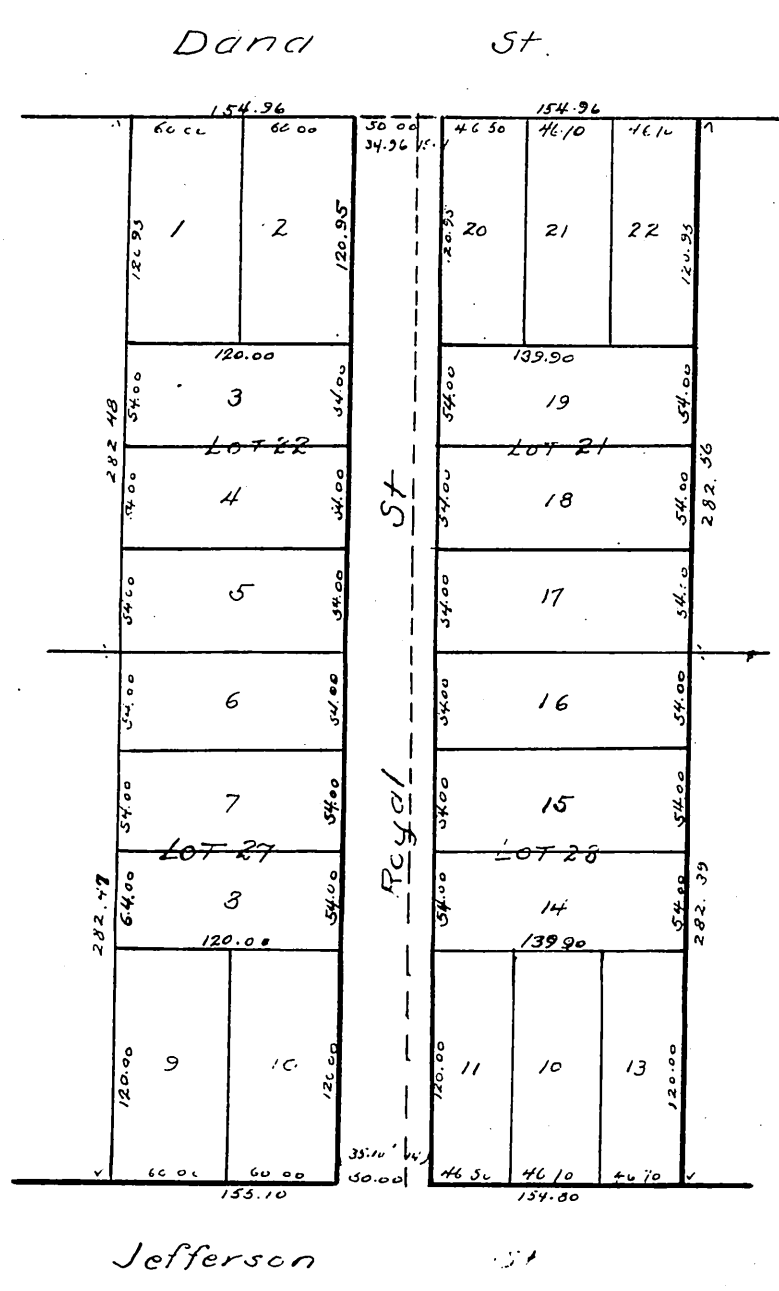


MR-6-206

Plat
OF
Regina Tract
City of Los Angeles
Scale 100ft to 1in.



1. The Regina Tract is a subdivision of Lots 21, 22, 27 and 28 of the Dana Tract and was surveyed and subdivided in Jan. 1885 By Geo. C. Knox
City Surveyor

2. Full true and correct copy of the original map recorded at request of Geo. C. Knox Jan'y. 21, 1885 at 11 min past 2 P.M.
Chas E. Miles Recorder
By W. B. Purchard Deputy