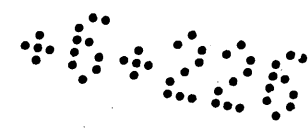


MR-6-226



MAP

OF

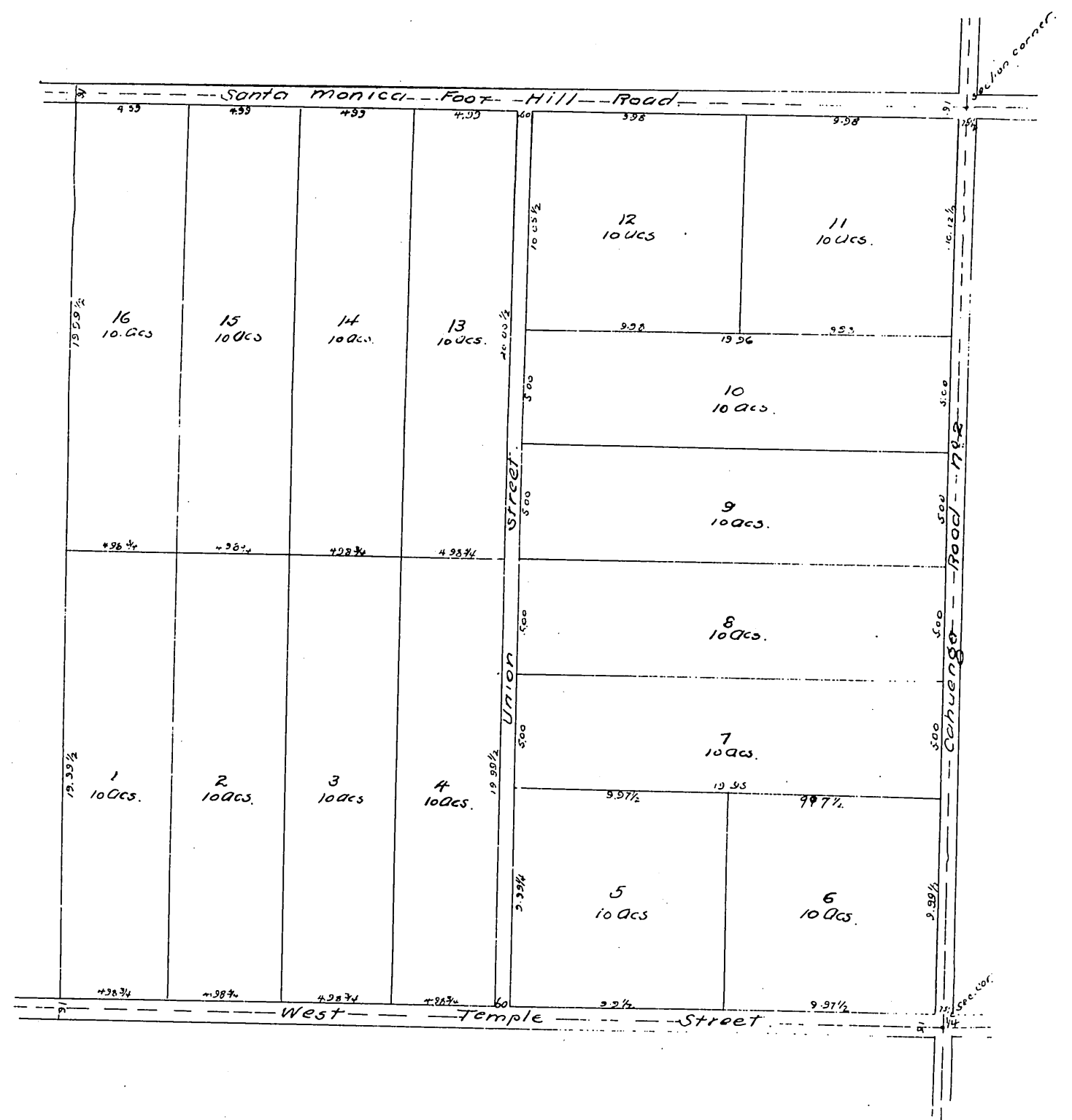
I. A. Weid's
Subdivision of
the N.E. 1/4 Sec. 14 T.
1. S. R. 14 W. S. B. M.

Surveyed Feb. 24, 1885.

By
E. T. Wright.

County Surveyor.

Scale 4 Chs. to 1 inch.



A full, true and correct copy of the original
reduced to the scale of 6 chs. to one inch.
recorded March 7, 1885 at 20 min past 11
at request of I. A. Weid

Chas. E. Miles County Recorder