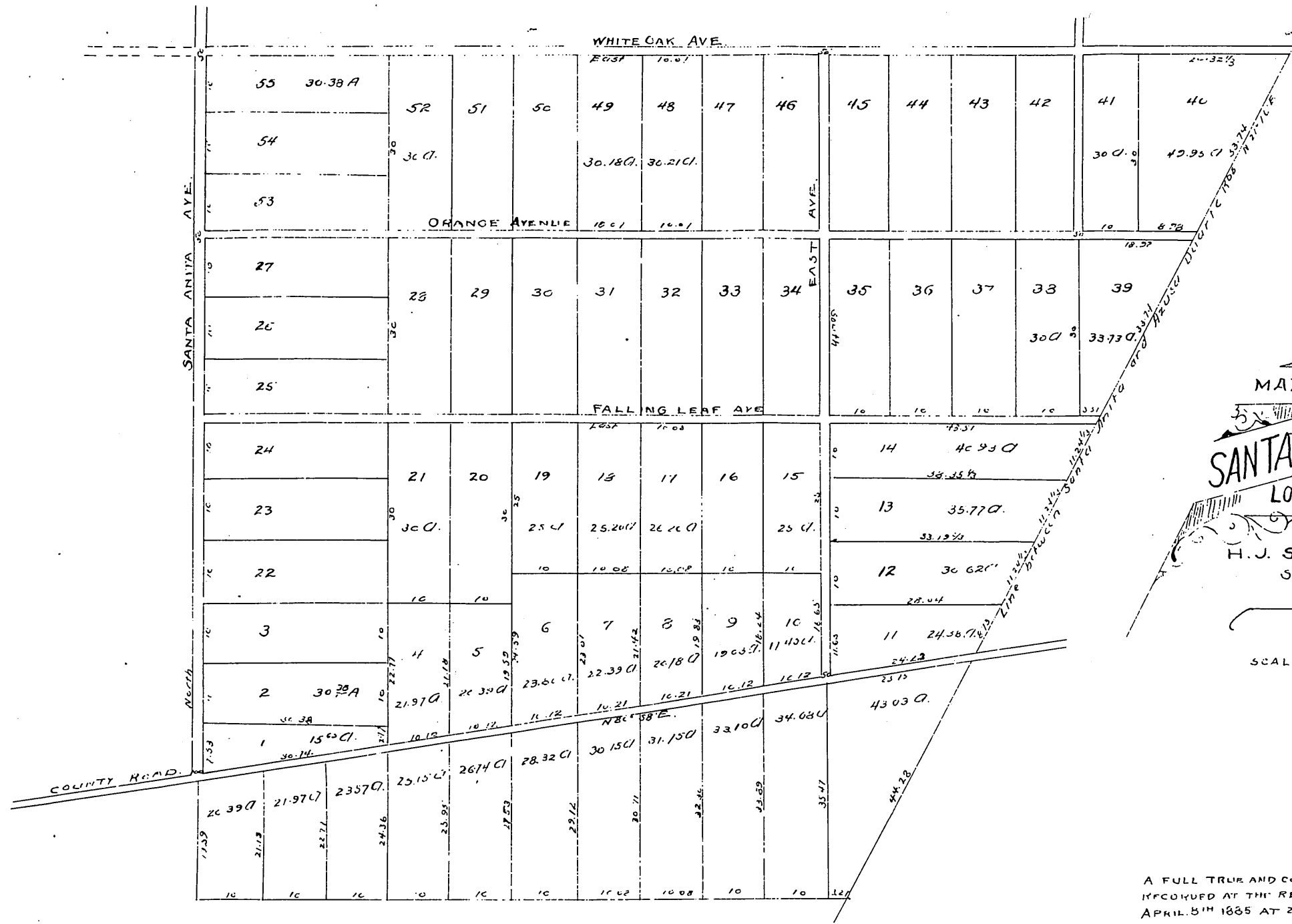


E. J. Baldwin's Home Place.



MAP OF THE  
**SANTA ANITA TRACT**  
 SANGABRIEL VALLEY,  
 LOS ANGELES COUNTY, CAL.  
 H. J. STEVENSON  
 SURVEYOR  
 1883  
 SCALE 20 CHAINS PER INCH

A FULL TRUE AND CORRECT COPY OF THE ORIGINAL  
 RECORDED AT THE REQUEST OF W. N. MONROE  
 APRIL 5th 1885 AT 25 MIN PAST 12 P. M.

Charles Miles COUNTY RECORDER