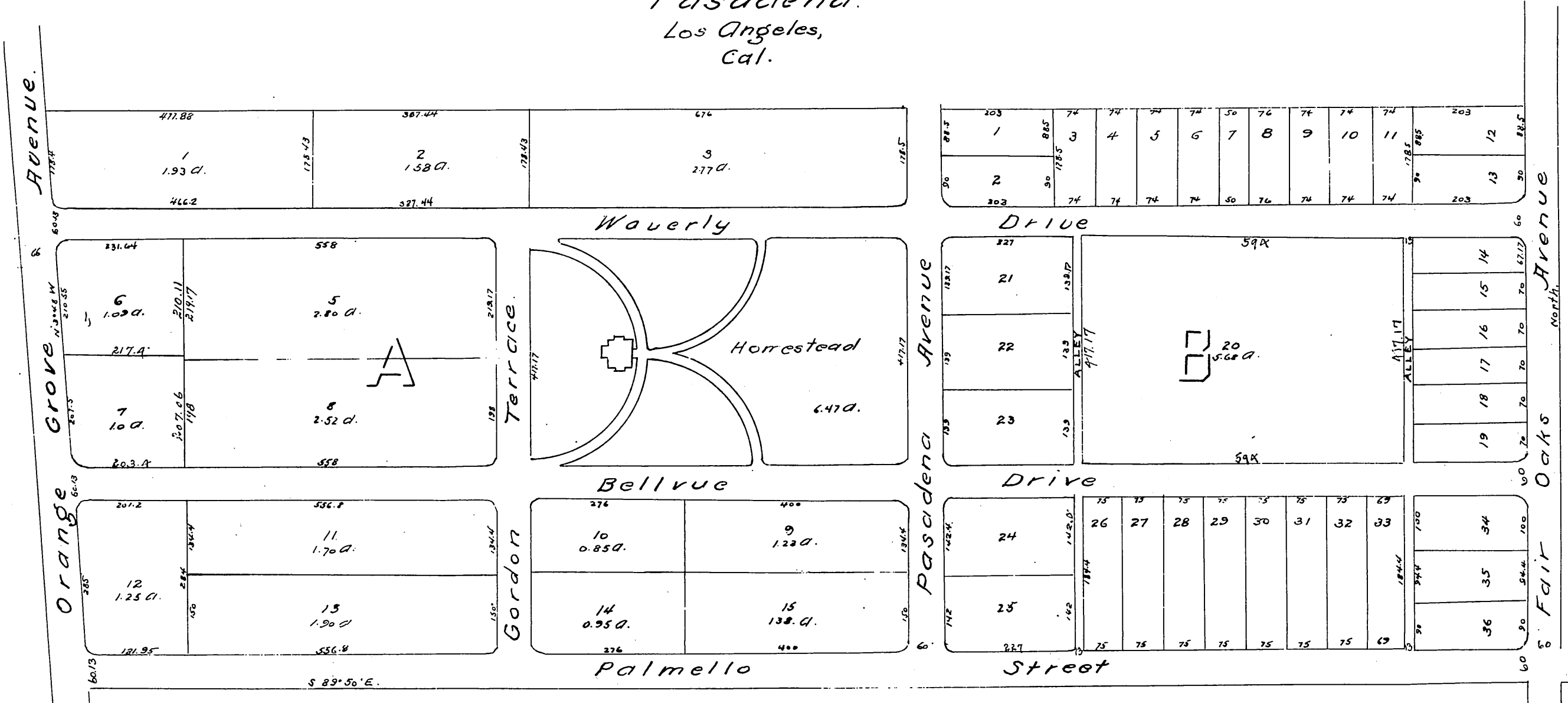


Map
OF THE
James Smith Tract
Pasadena.
Los Angeles,
Cal.



H. J. Stevenson. Sur.
April 1885
SCALE 100 FEET PER INCH.

A FULL TRUE AND CORRECT COPY OF THE ORIGINAL
REDUCED TO THE SCALE OF 200 FEET TO ONE INCH
RECORDED APRIL 21ST 1885 AT 50 MIN PAST 11 AM.
AT REQUEST OF JAMES SMITH
Chas. E. Miles COUNTY RECORDER.