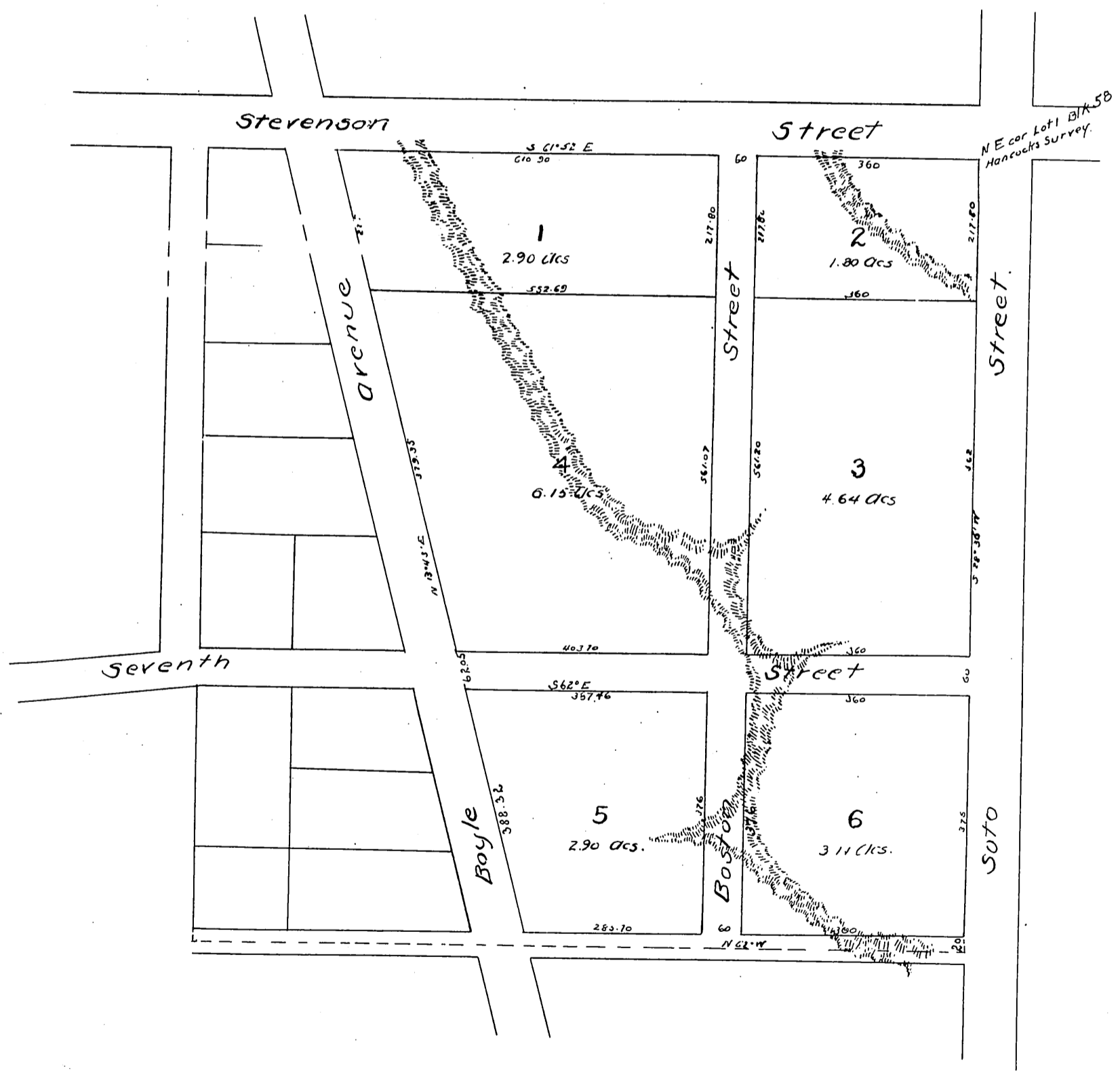


MR-6-251



Map  
 OF  
 C.W. Davis  
 Subdivision  
 OF  
 Easterly portion  
 OF  
 Lot 1 Block 58 Hancock Survey  
 Los Angeles, Cal.  
 Surveyed May 1884  
 by E. T. Wright  
 Scale 100 feet per inch.



A full true and correct copy of the original  
 reduced to the scale of 200 feet to one inch  
 Recorded April 16<sup>th</sup> 1885 at 1 min past 3 P.M.  
 at request of Dennis & Cook.

Chas E Miles Co. Recorder.