

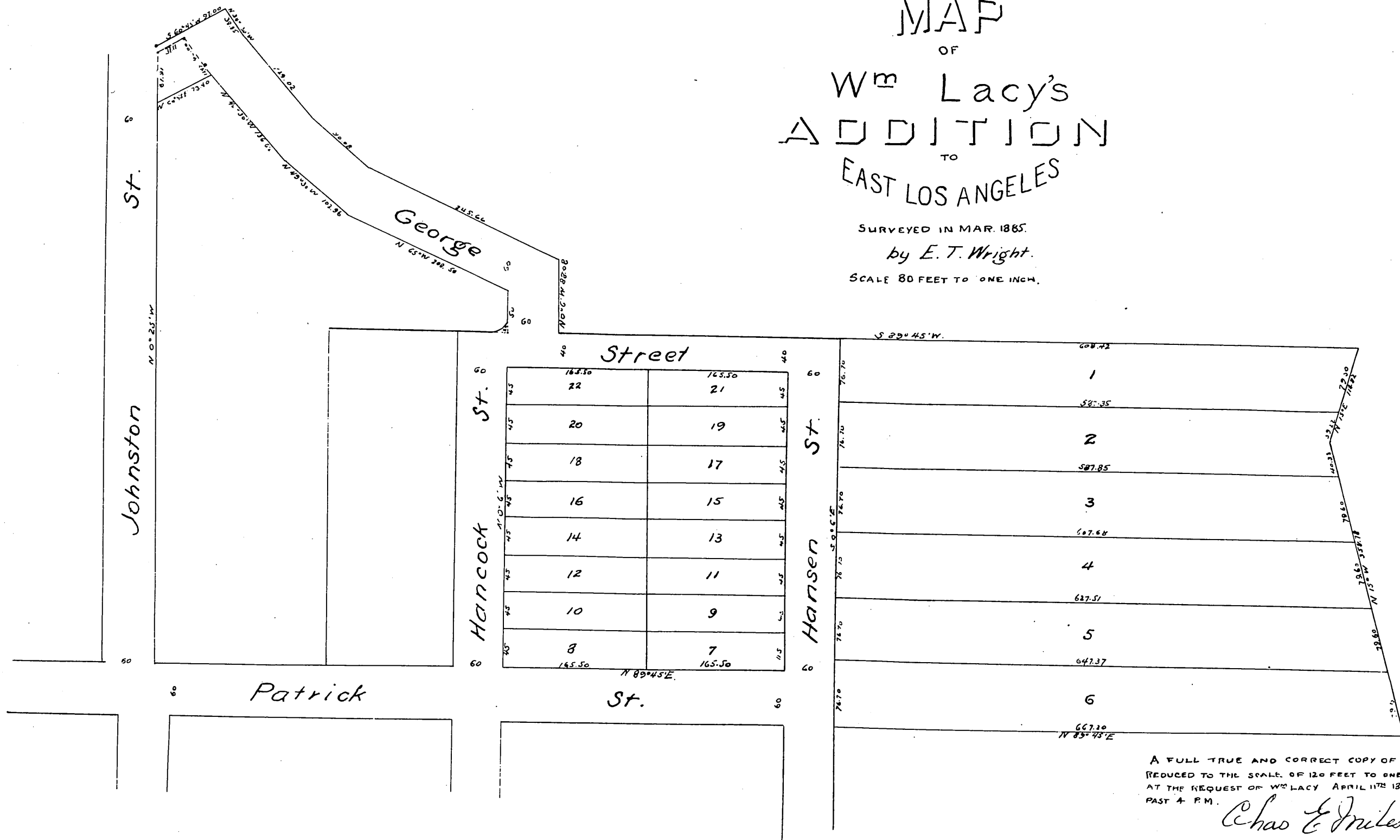


MAP  
OF  
Wm Lacy's  
ADDITION  
TO  
EAST LOS ANGELES

SURVEYED IN MAR. 1885.

by E. T. Wright.

SCALE 80 FEET TO ONE INCH.



A FULL TRUE AND CORRECT COPY OF THE ORIGINAL  
REDUCED TO THE SCALE OF 120 FEET TO ONE INCH RECORDED  
AT THE REQUEST OF WM LACY APRIL 11<sup>TH</sup> 1885 AT 34 MIN  
PAST 4 P.M.

Chas E Miles Co RECORDER.