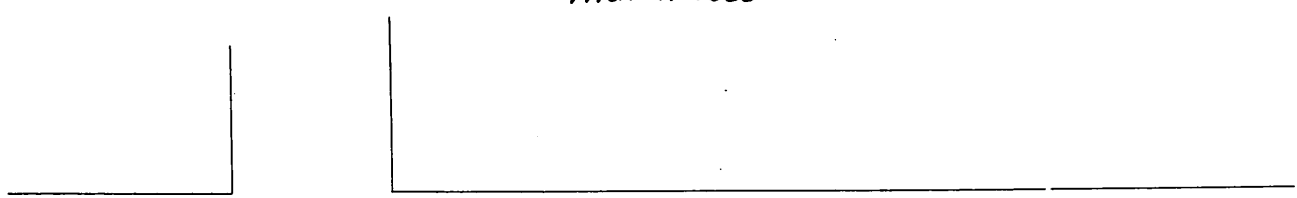
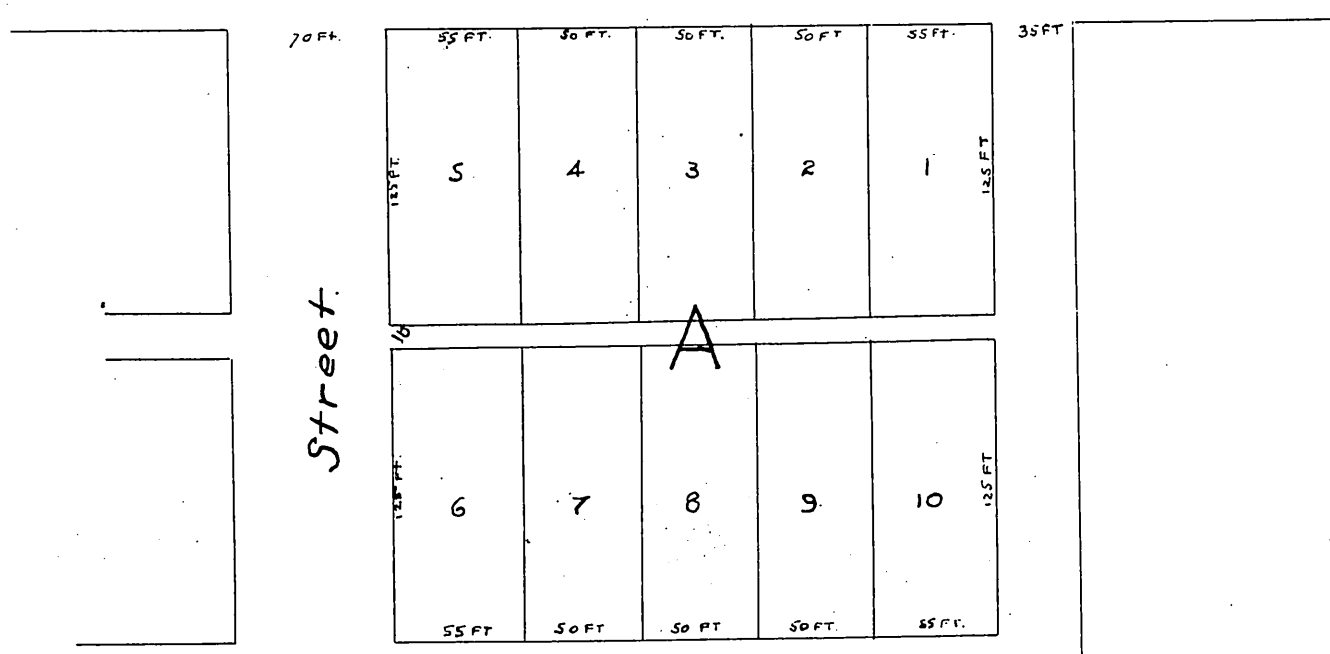


MR-6-307

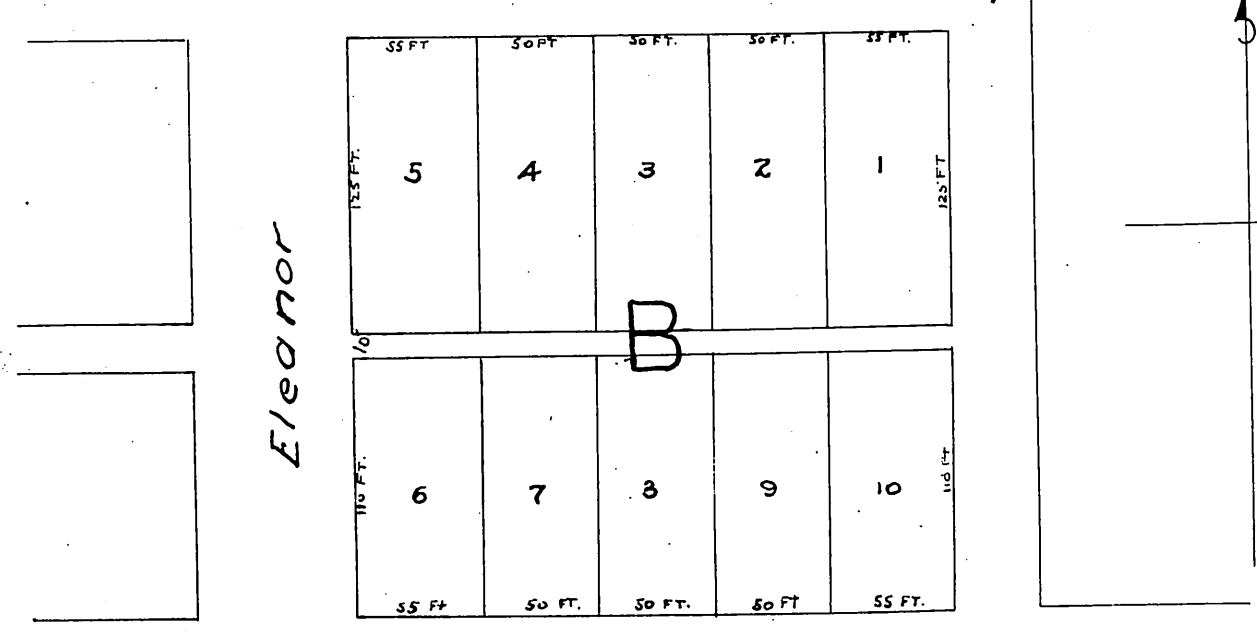
Map  
OF  
E.T. Palmers Subdivision  
OF THE  
West Half of Block 148  
Pomona Tract Pomona Cal.  
Scale 50 feet to 1 inch.  
Jas. T. Taylor Surveyor  
March 1885.



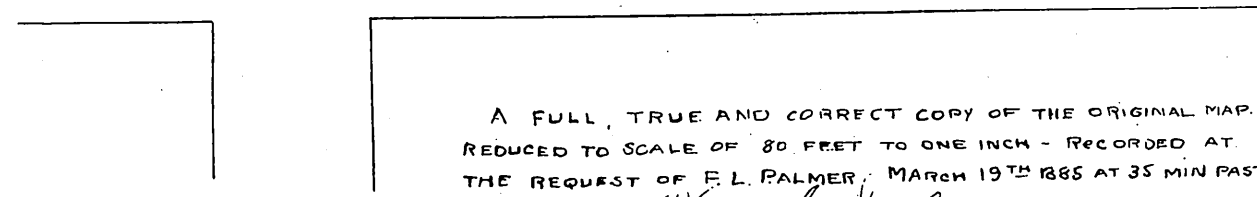
Third Street



Fourth Street



Fifth Avenue



A FULL, TRUE AND CORRECT COPY OF THE ORIGINAL MAP.  
REDUCED TO SCALE OF 80 FEET TO ONE INCH - RECORDED AT  
THE REQUEST OF E. L. PALMER, MARCH 19TH 1885 AT 35 MIN PAST  
9 A.M.  
Chas. E. Miles COUNTY RECORDER.