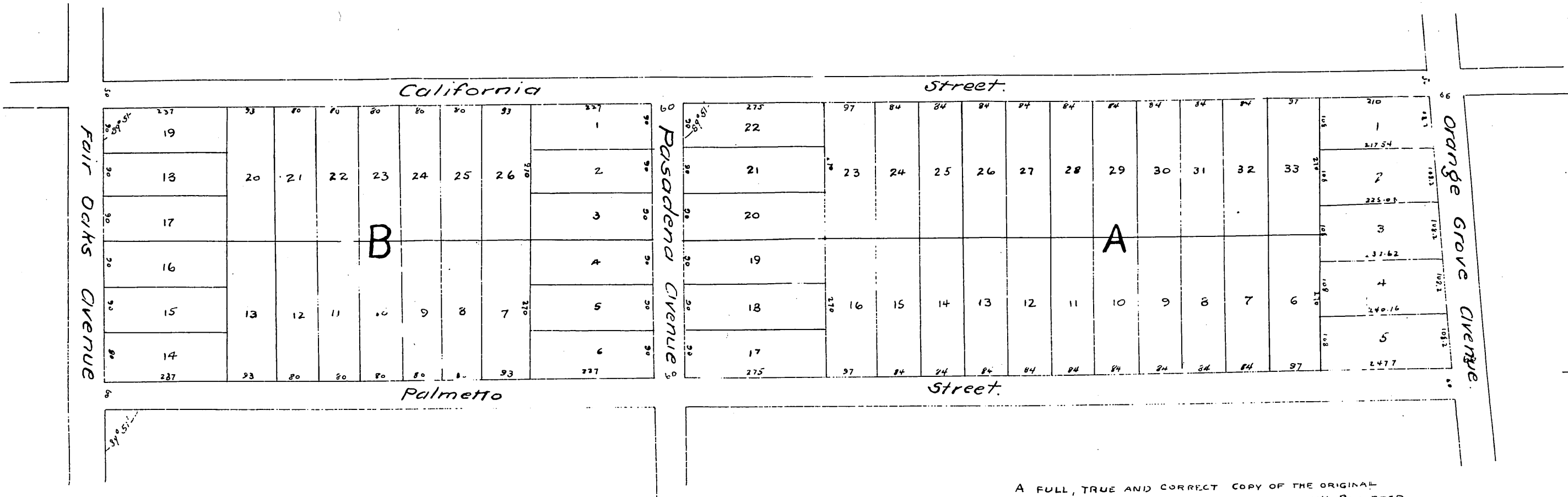


PLAT
OF THE
SUBDIVISION
OF THE
MAGEE GALBRAITH & MARKHAM TRACT
PASADENA CAL.

SURVEYED BY
Williell Thomson,
March 1885

SCALE 80 FEET TO ONE INCH.



A FULL, TRUE AND CORRECT COPY OF THE ORIGINAL
REDUCED TO THE SCALE OF 200 FEET TO ONE INCH RECORDED
AT REQUEST OF MAGEE GALBRAITH AND MARKHAM, MAY 14TH 1885 AT
20 MIN PAST 3 PM

Chas E. Miles. COUNTY RECORDER