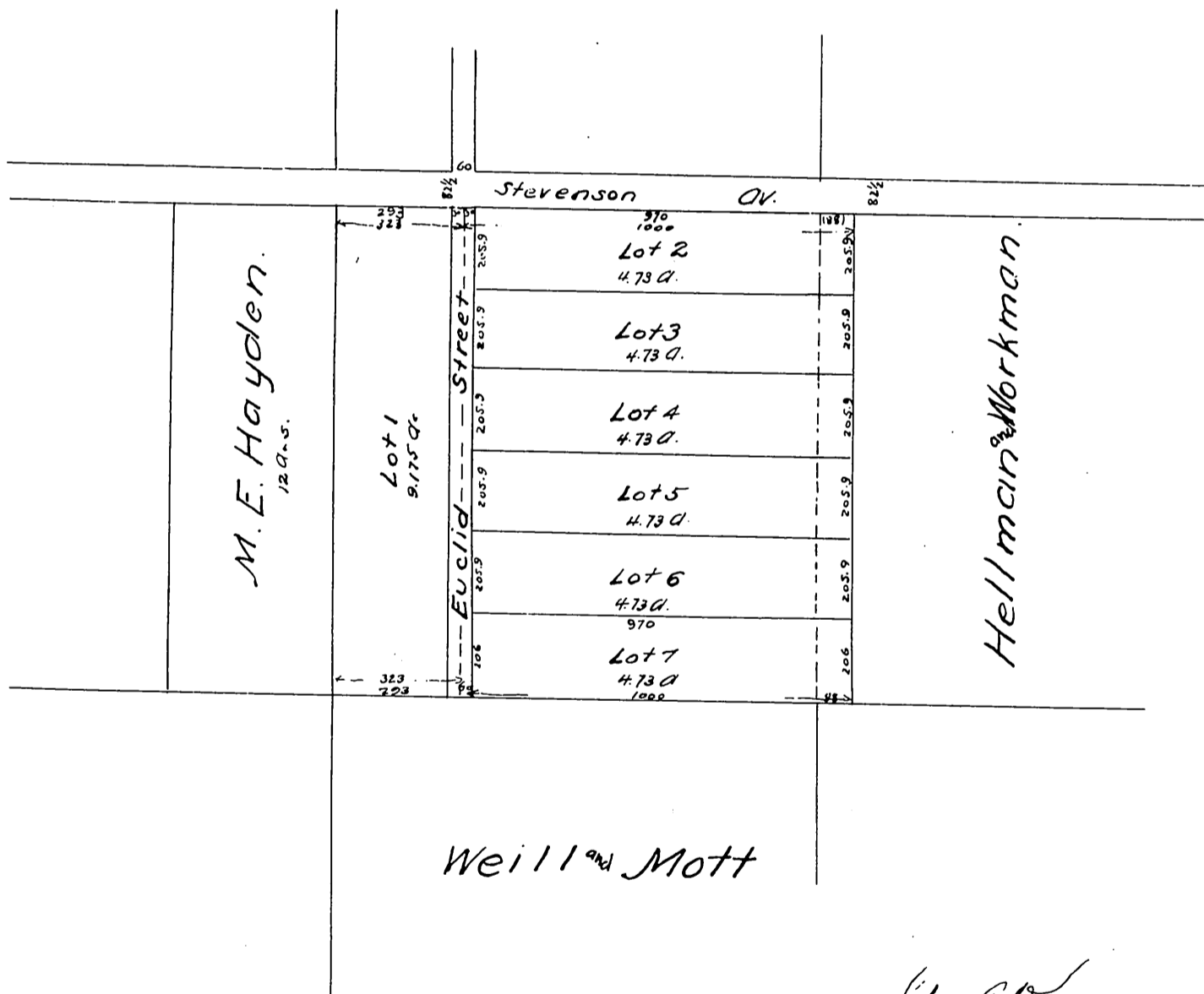


MR-6-334

Map  
of  
WORKMAN & HELLMAN'S SUBDIVISION  
of  
Lot 2 and part of Lot 1 Block 71  
Hancock's Survey.

Scale 400 ft per inch



*Geo Knox*

A FULL, TRUE AND CORRECT COPY OF THE ORIGINAL  
RECORDED MAY 29<sup>th</sup> 1885 AT 6 MIN PAST 2 P.M. AT REQUEST.  
OF T. H. WORKMAN

*Chas E Miles*, COUNTY RECORDER