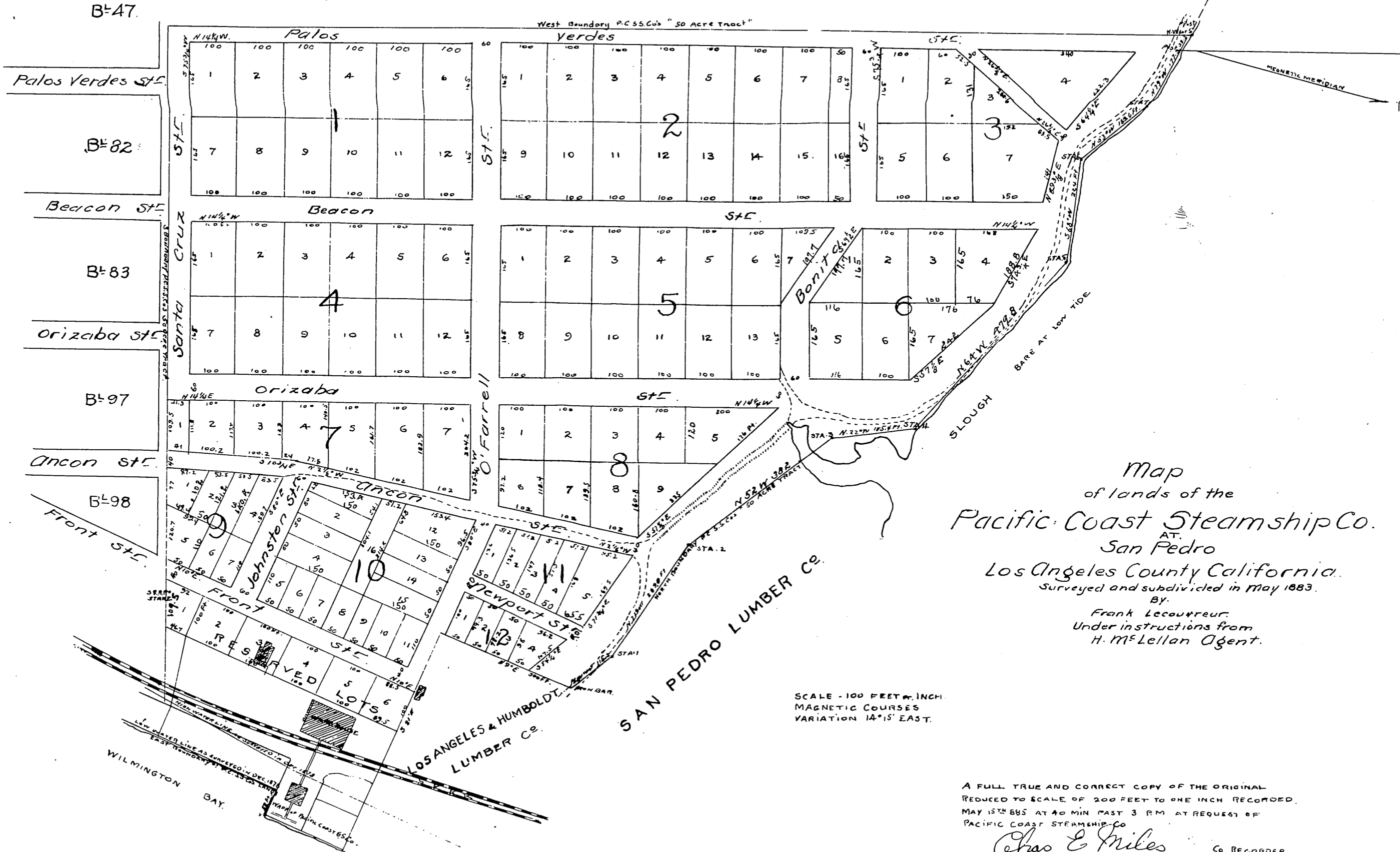


Rancho Palos Verdes.

Town of San Pedro



Map
of lands of the
Pacific Coast Steamship Co.
AT
San Pedro
Los Angeles County California.
Surveyed and subdivided in May 1883.
By
Frank Lecoutreur.
Under instructions from
H. McEllan Agent.

SCALE - 100 FEET = 1 INCH.
MAGNETIC COURSES
VARIATION 14° 15' EAST.

A FULL TRUE AND CORRECT COPY OF THE ORIGINAL
REDUCED TO SCALE OF 200 FEET TO ONE INCH RECORDED
MAY 15TH 1885 AT 40 MIN PAST 3 PM AT REQUEST OF
PACIFIC COAST STEAMSHIP CO.

Chas E Miles CO RECORDER.