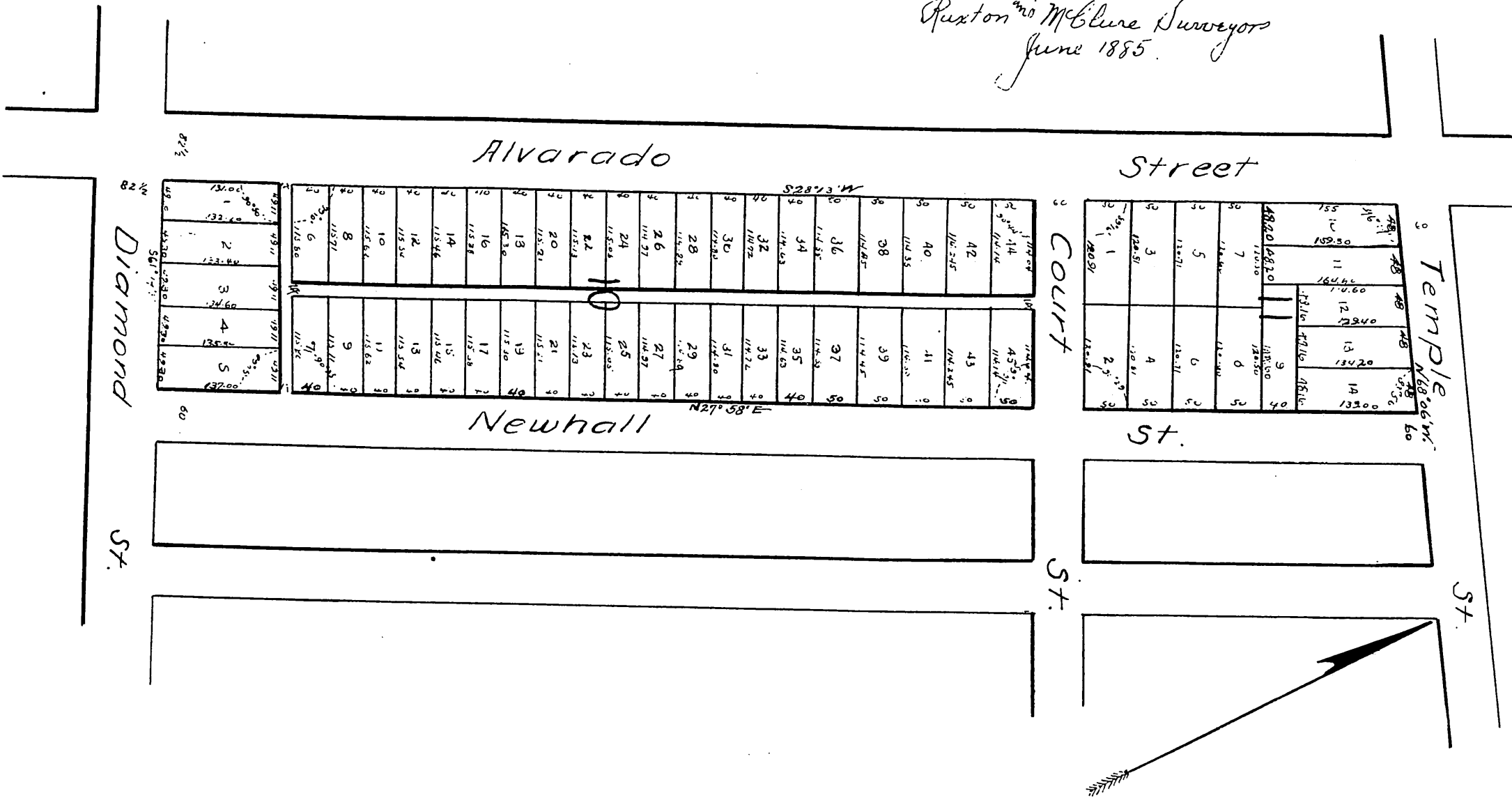


Map
OF
Subdivision of part of
Highland Tract Addition No. 1.
Scale 100 ft per inch.

Ruxton and McClure Surveyors
June 1885.



A full, true and correct copy of the original
 Reduced to scale of 150 ft per inch Recorded
 June 8th 1885 at 45 min past 3 P.M. at request of
 Jesse Larned.
 Chas. E. Miles Co. Recorder
 Deputy.

