

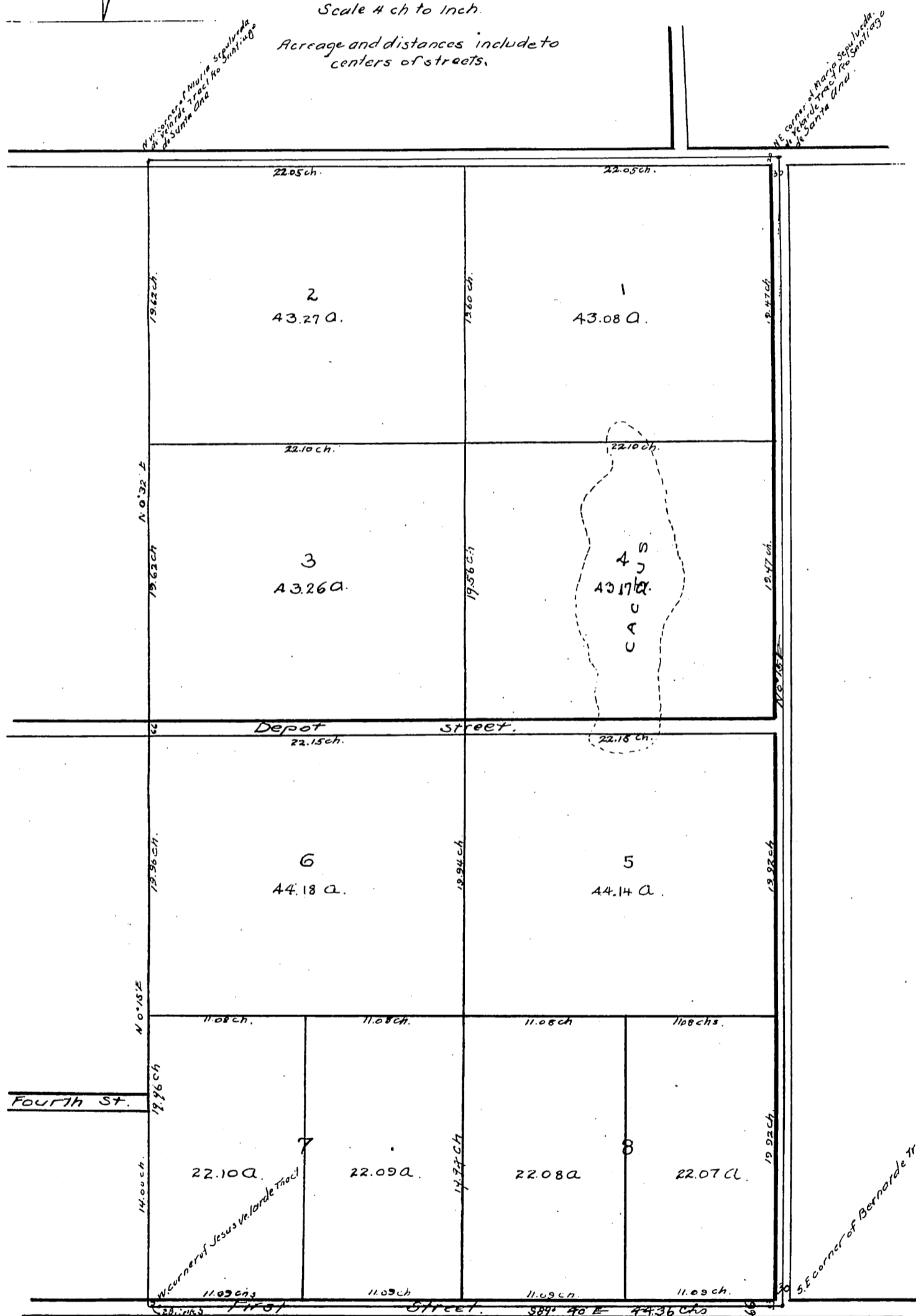
MR-6-341

Plat
 showing subdivisions
 OF THE
 Mabury Tract
 by
 H.C. KELLOGG
 1885



Scale 4 ch to Inch.

Acreage and distances include to centers of streets.



A full true and correct copy of the Original
 Reduced to scale of 8 chs. to one inch Recorded at
 request of Piez James June 5th 1885 at 1 min past 9
 AM.
 Chas E Miles
 Co. Recorder.