

Map of the O. W. CHILDS TRACT

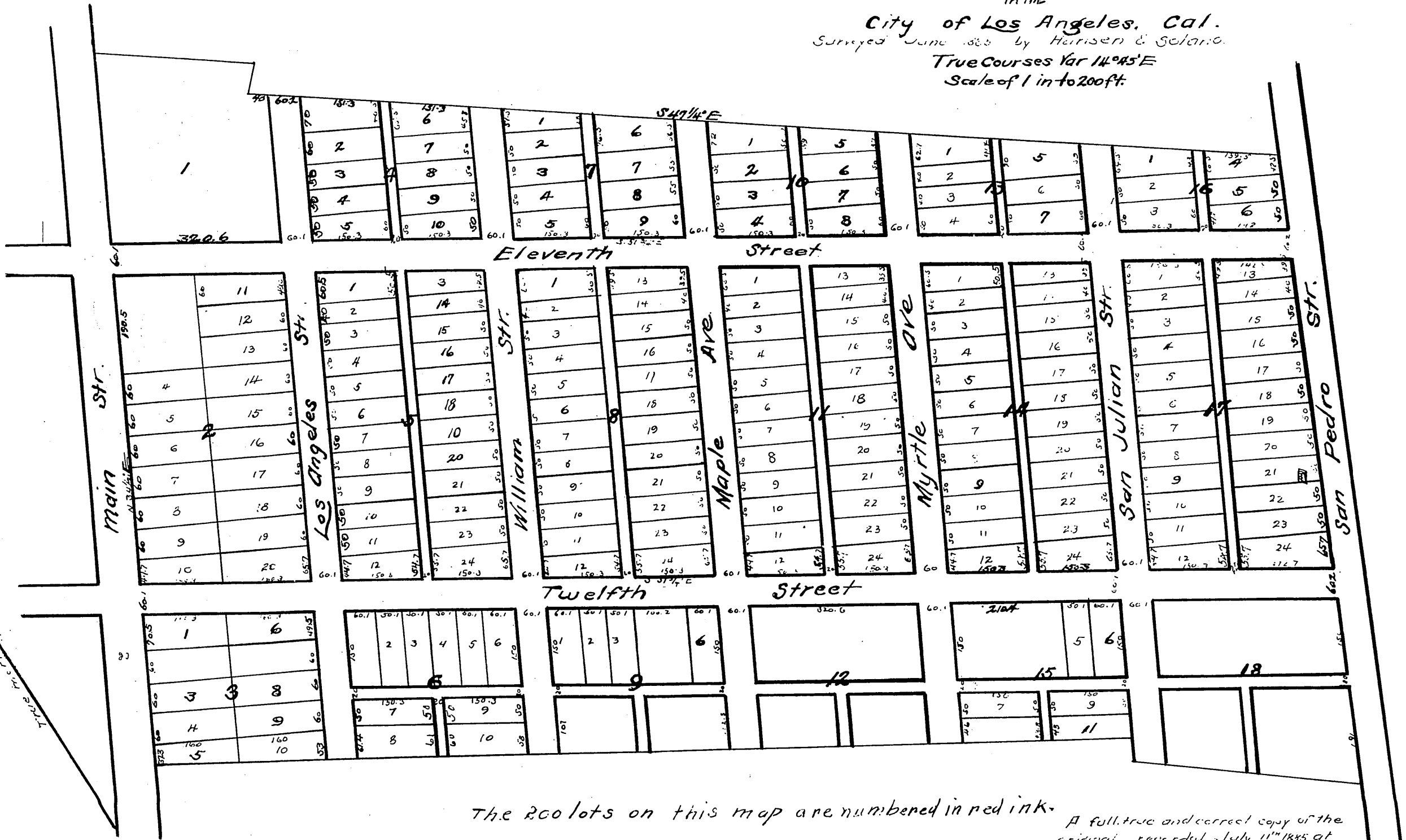
200 LOTS
in the

City of Los Angeles, Cal.

Surveyed June 1885 by Harrison & Solano.

True Courses Var 14°45'E

Scale of 1 in to 200 ft.



The 200 lots on this map are numbered in red ink.

A full, true and correct copy of the original recorded July 11th 1885 at 10 min past 1 P.M. at request of O.W. Childs

Charles J. Filice, County Recorder.

