

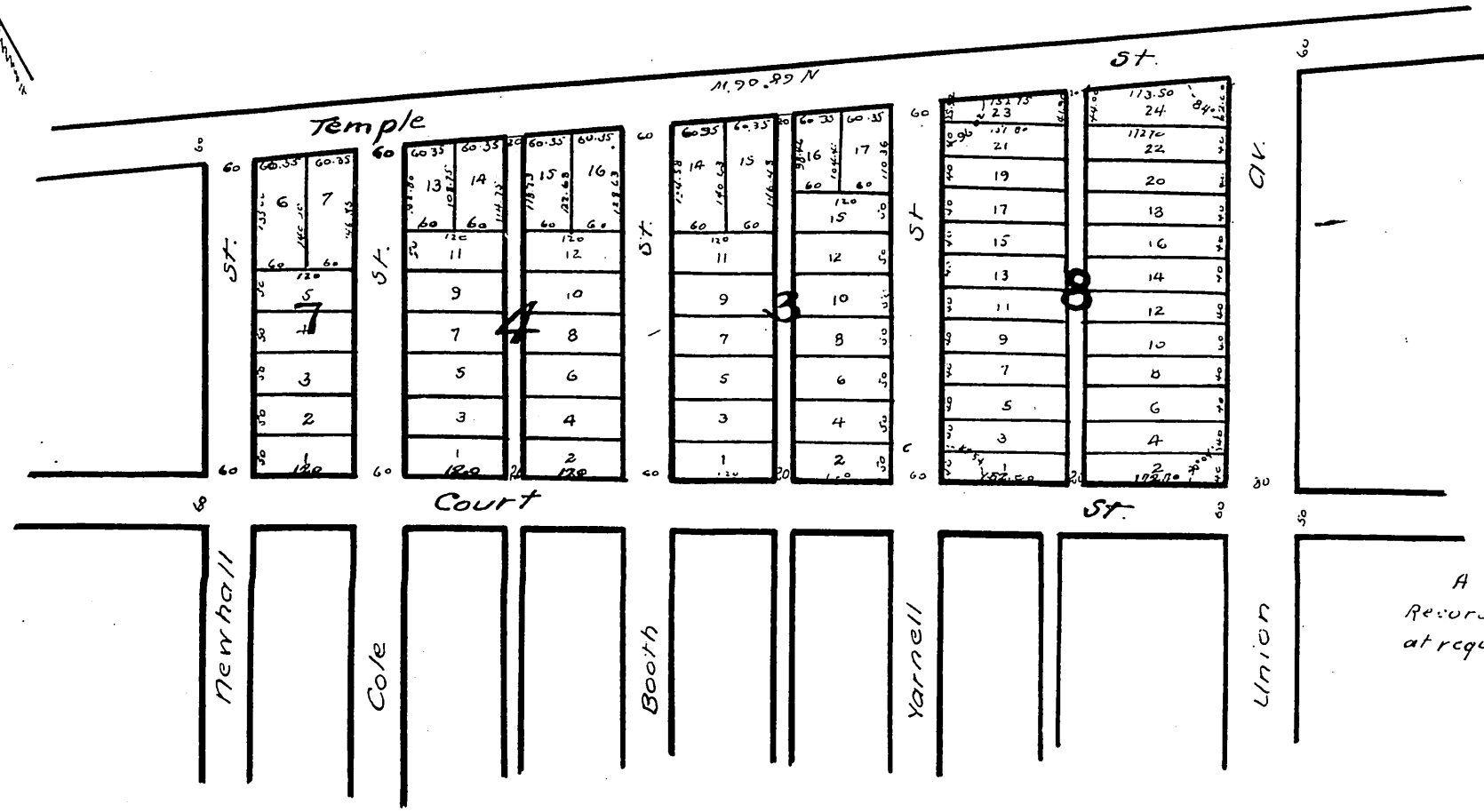
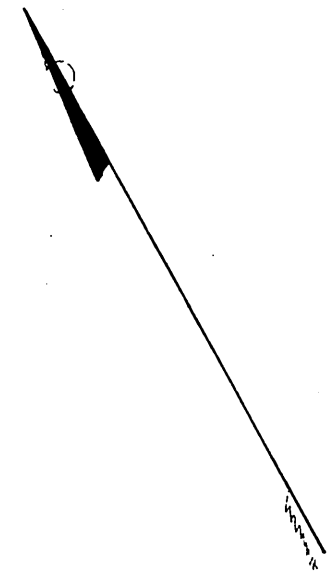
Map of part of
HIGHLAND TRACT ADDITION No 1

the property of the
Los Angeles Improvement Co.

Scale 200 feet per inch.

Blocks 3, 4 & 7 were surveyed Feb. 1884 by E. T. Wright.
 Block 8 surveyed July 1885 by

Raxton & McClure



A full true and correct copy of the original
 Recorded July 15th 1885 at 46 min past 9 A.M.
 at request of H. C. Witmer

Chas. F. Miles County Recorder

MR-6-385