

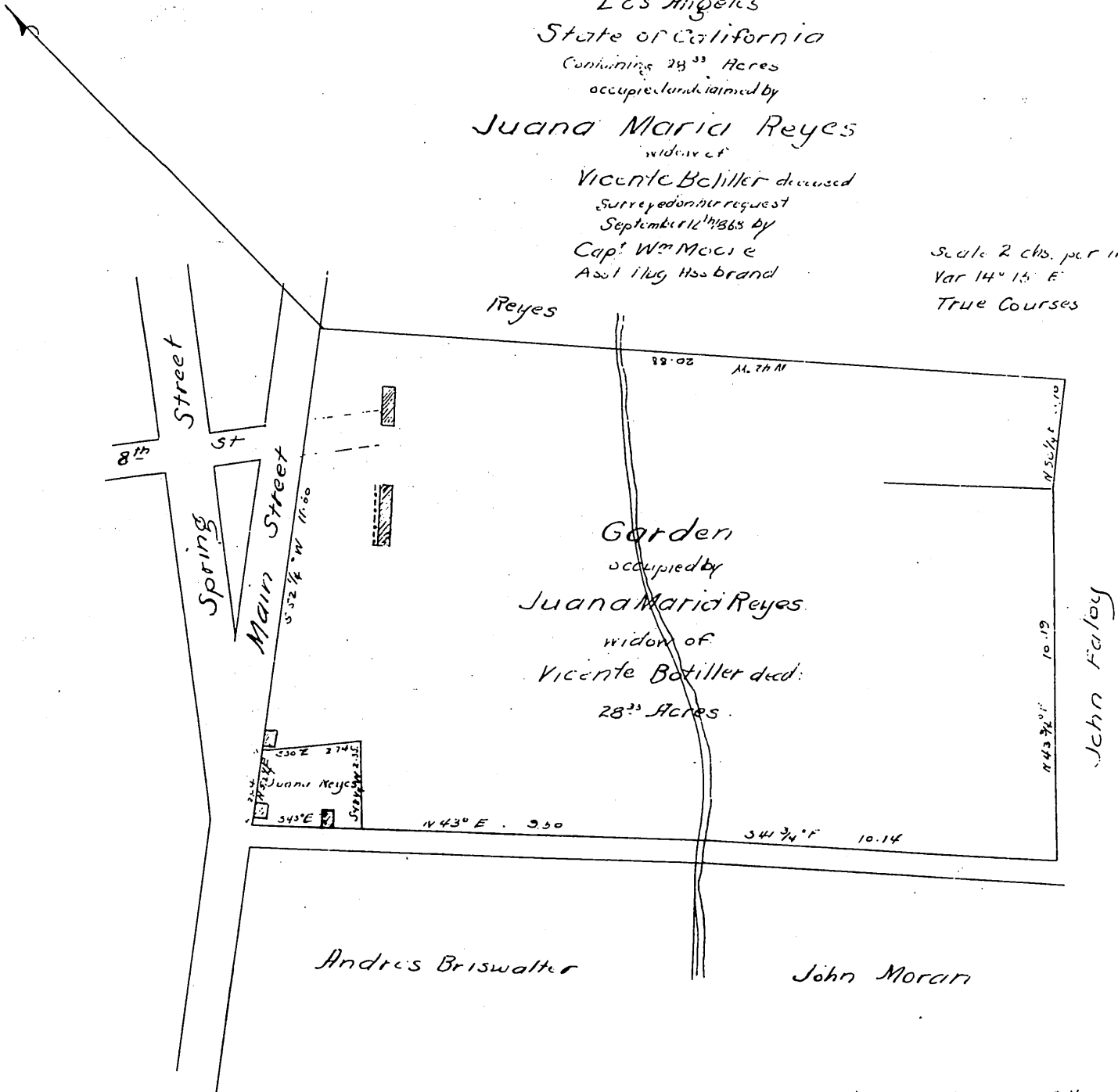
MR-6-386

Map  
of a tract of land situate in the City and County  
of  
Los Angeles  
State of California  
Containing 28<sup>33</sup> Acres  
occupied and claimed by

Juana Maria Reyes  
widow of

Vicente Botiller deceased  
Surrendered her request  
September 12<sup>th</sup> 1865 by  
Cap<sup>t</sup> W<sup>m</sup> Moore  
Asst Surg H.S. brand

Scale 2 chs. per inch  
Var 14° 15' E  
True Courses



A full true and correct copy of the original  
Reduced to scale of 4 chs to one inch Recorded  
July 8<sup>th</sup> 1882 at 3 min past 10 A.M. at request of  
Juana Maria Reyes

*[Signature]* Li Recorder