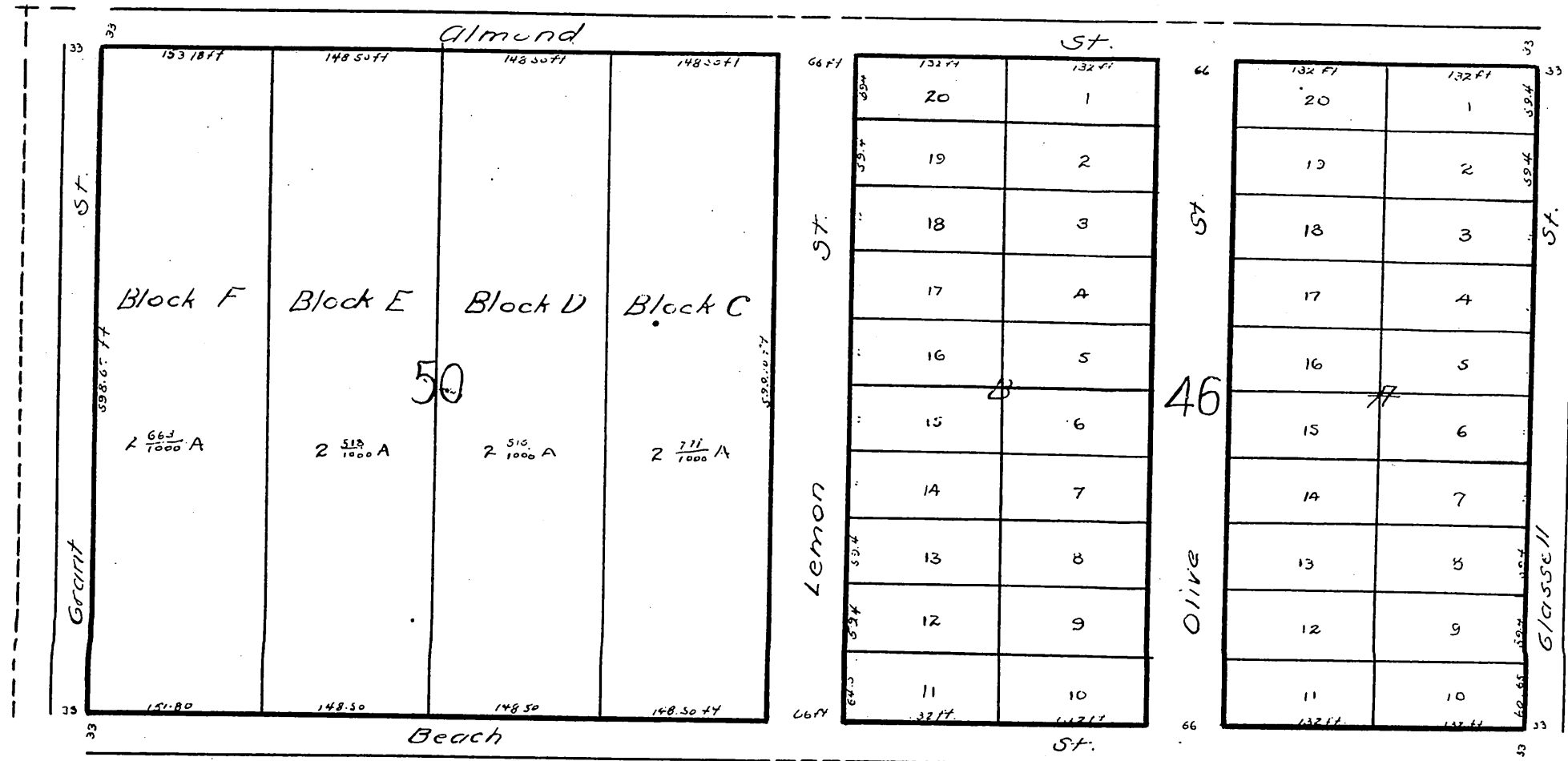
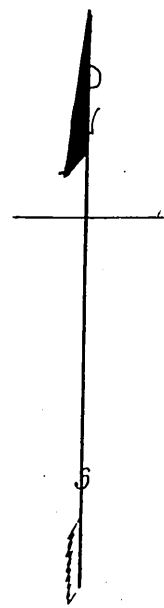


# MAP OF BEACH'S ADDITION TO ORANGE

Being subdivision of Lots 4C and 50 of "Richland Farm Lots" in Parisho Santiago de Santa Ana in Los Angeles Co. Cal. as surveyed for Joseph Beach, by me in July 1863 John T. Halsted Civ. Engr.



Scale 1 inch = 132 ft.

A full true and correct copy of the original recorded July 13<sup>th</sup> 1865 at 25 minutes past 3 P.M. at request of Geo H Beach.

Wm. T. Miles County Recorder.