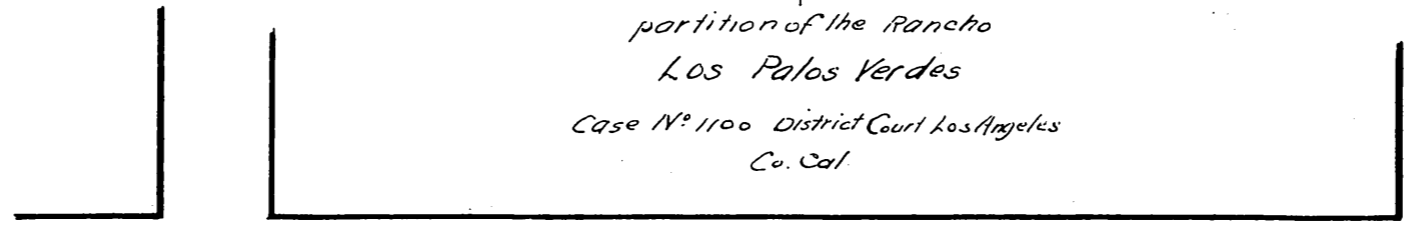


207

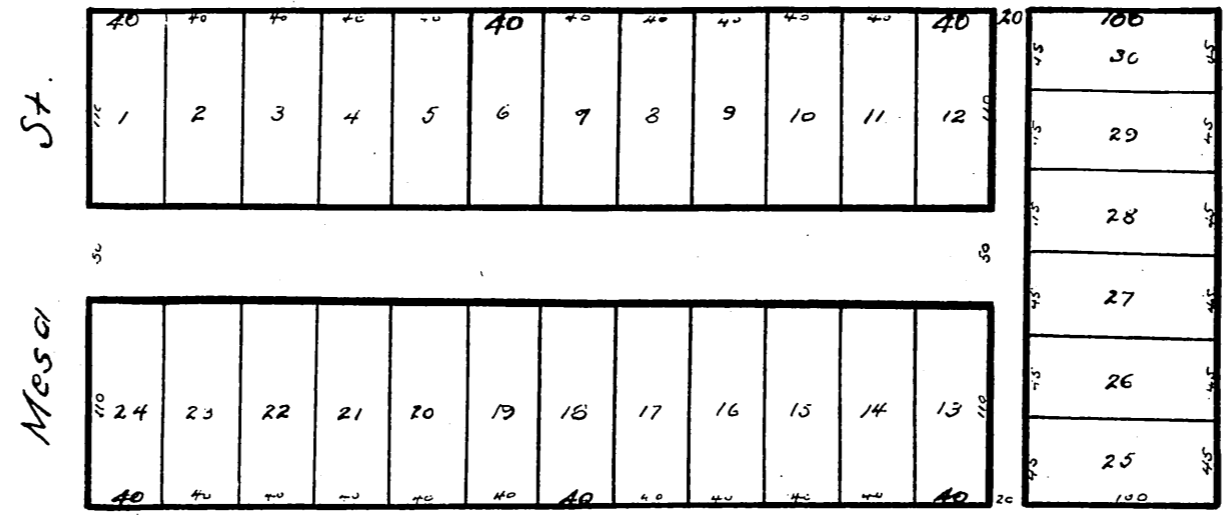
208

Map  
 of  
 H. Hillers Subdivision  
 of  
 Block 42 Town of San Pedro

according (as to location of said Block) to map  
 filed in Sep 1882 by Commissioners in  
 partition of the Rancho  
 Los Palos Verdes  
 Case N<sup>o</sup> 1100 District Court Los Angeles  
 Co. Cal.



Fourth St.



St.

Mesa

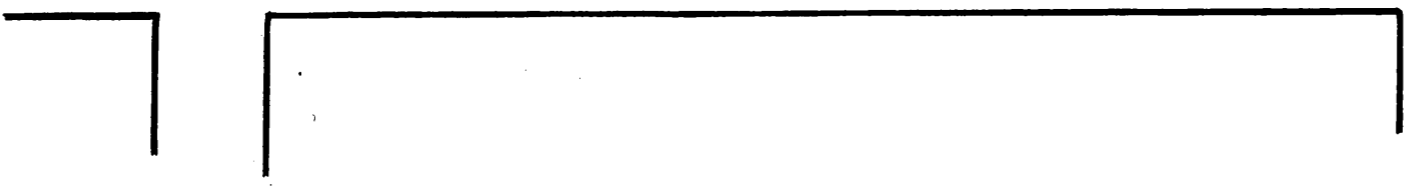
St.

Center

A full true and correct copy of the original  
 recorded July 15<sup>th</sup> 1885 at 49 min past 11 A.M.  
 at request of H. Hiller

Chas E Miles County Recorder

Fifth St.



MR-6-402