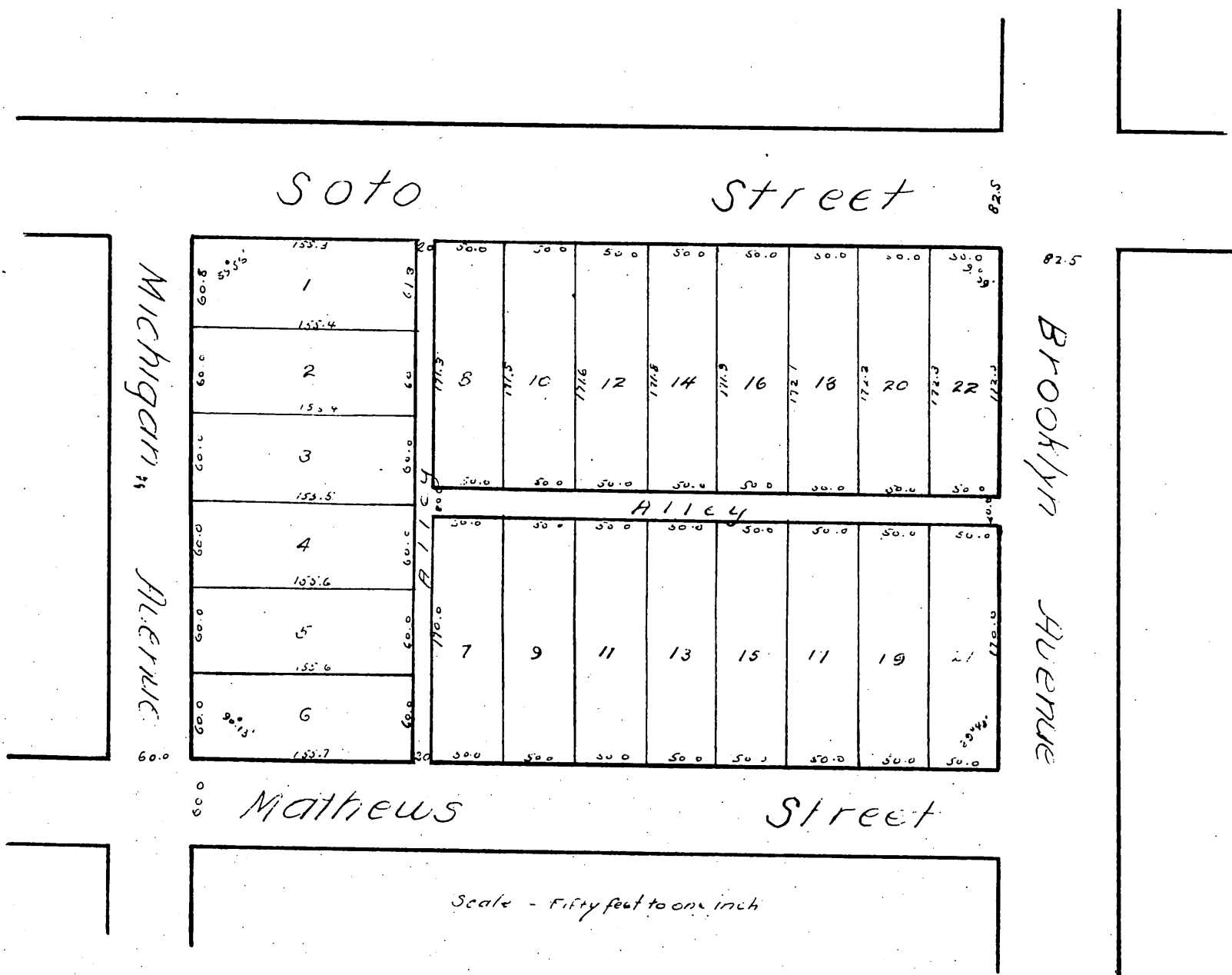


MR-6-426

Plat  
of  
Miles Tract.  
formerly  
Block 2, Matthews and Ficket Tract  
City of Los Angeles.  
Surveyed and subdivided at request of D.E. Miles  
in Oct 1884 by Geo C. Knox City Sur.



This is a full true and correct copy of the original  
reduced to the scale of 100 feet to one inch.  
Recorded August 14<sup>th</sup> 1885 at 1 min past 2 PM.  
at request of D.E. Miles

Chas E Miles

County Recorder