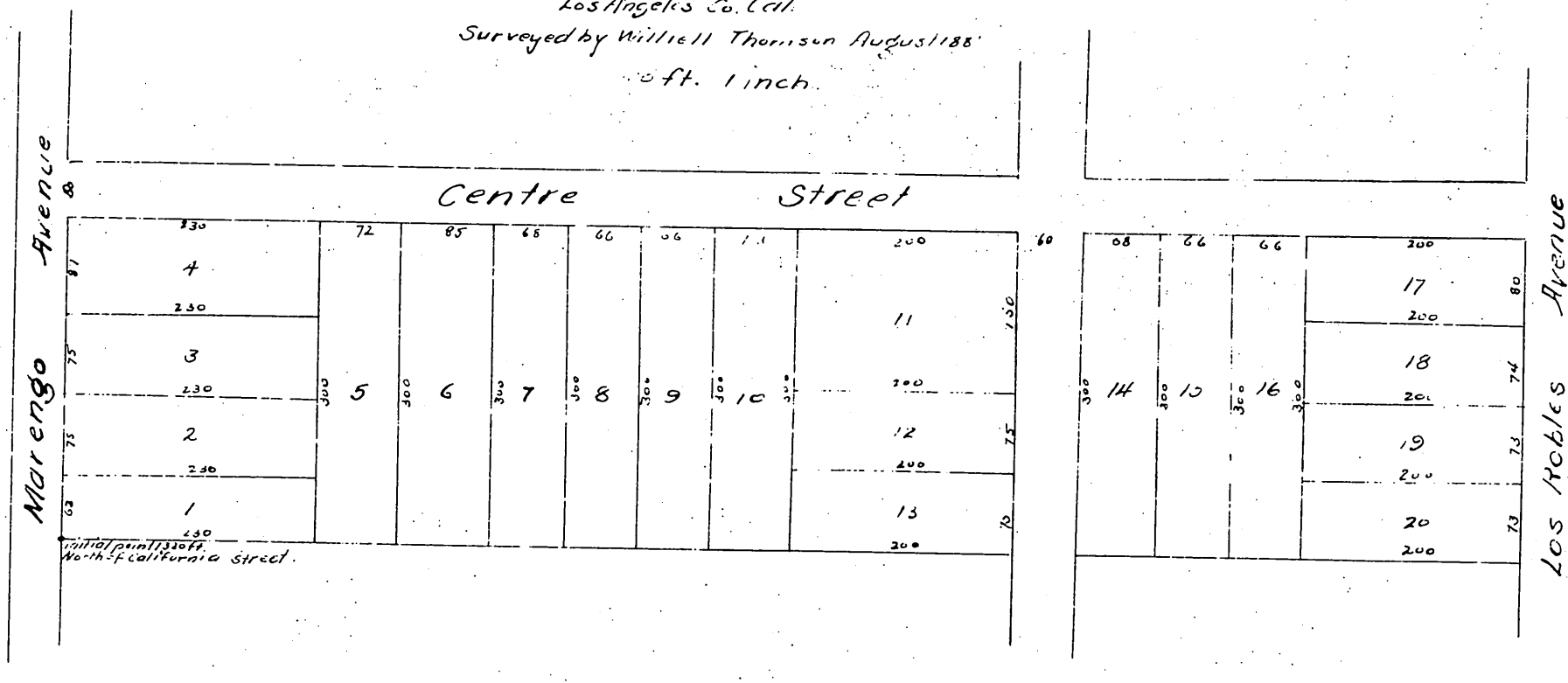
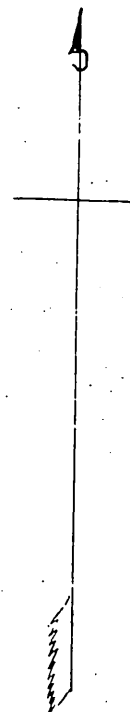


PLAT
OF
M H WEIGHT'S

SUBDIVISION OF THE
S 1/2 of Lots 7 and Block 1 of the
San Pasqual Tract
Pasadena
Los Angeles Co. Cal.
Surveyed by Willielm Thomson August 1885
at 1/2 in. = 100 ft. 1 inch.



A full true and correct copy of the original
Reduced to the scale of 150 feet to one inch
Recorded August 15th 1885 at 34 min past 3
P.M. at request of M.H. Weight.

Chas E Miles County Recorder