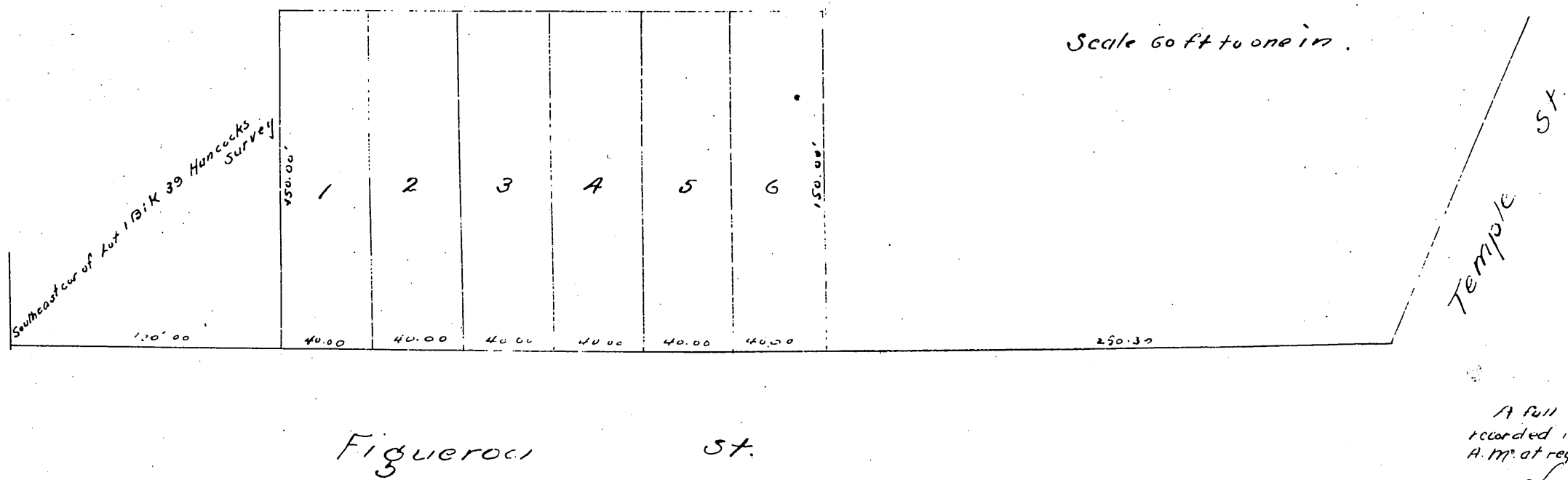


Plat
of the
Beauvoir Tract
in the
City of Los Angeles
subdivided
at the request of J.C. Kays in Feb. 1885.
by
Geo C. Knox City Surveyor



A full true and correct copy of the plat was
recorded August 19th 1885 at 11 minutes past 11
A.M. at request of James C. Kays.
Chas E Miles County Recorder.