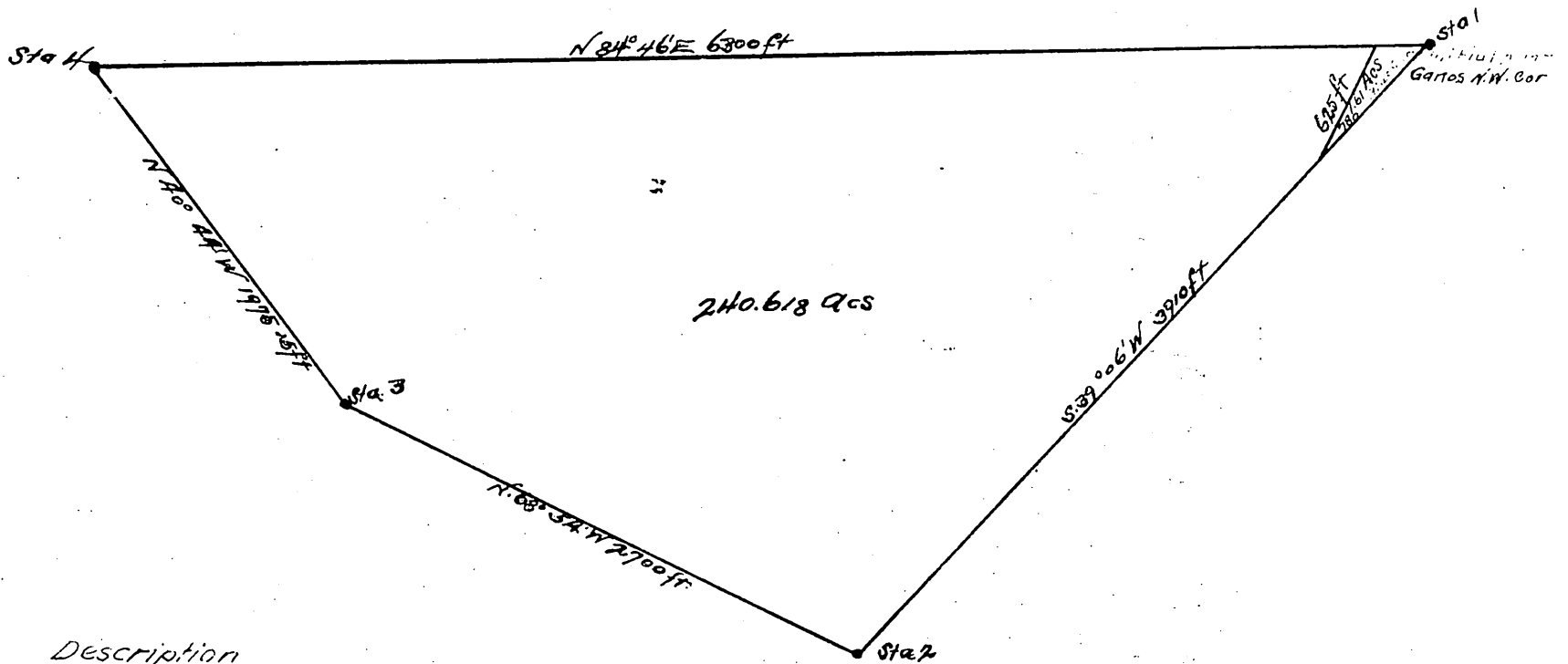


MR-6-440<sup>B</sup>

Plat  
of the  
Olive Tract  
a part of the  
Woodbury Tract  
Pasadena Cal

Surveyed April  
1835  
William Thomson  
Scale 400 ft to 1 in



Description  
of the  
Olive Tract  
being a part of the lands in  
Rancho San Pascual  
Los Angeles Co CAL  
owned by  
F. J. and J. P. Woodbury.

A full true and correct copy of the original  
reduced to scale 2 800 ft per inch recorded  
Sept 14<sup>th</sup> 1835 at 3 pm next 1 P.M. at request of  
F. J. Woodbury.

John E. Miles County Recorder

Sta 1 the initial point as per map is distant N 84° 00' W 7345 ft from Sta 3  
is the original Survey of the Rancho San Pascual Sta 1 is also P. G. and N. W. cor

Sta 1	S 39° 06' W	3910 ft
Sta 2	N 68° 34' W	2700 ft
Sta 3	N 70° 54' W	1975 ft
Sta 4	N 24° 46' E	6300 ft