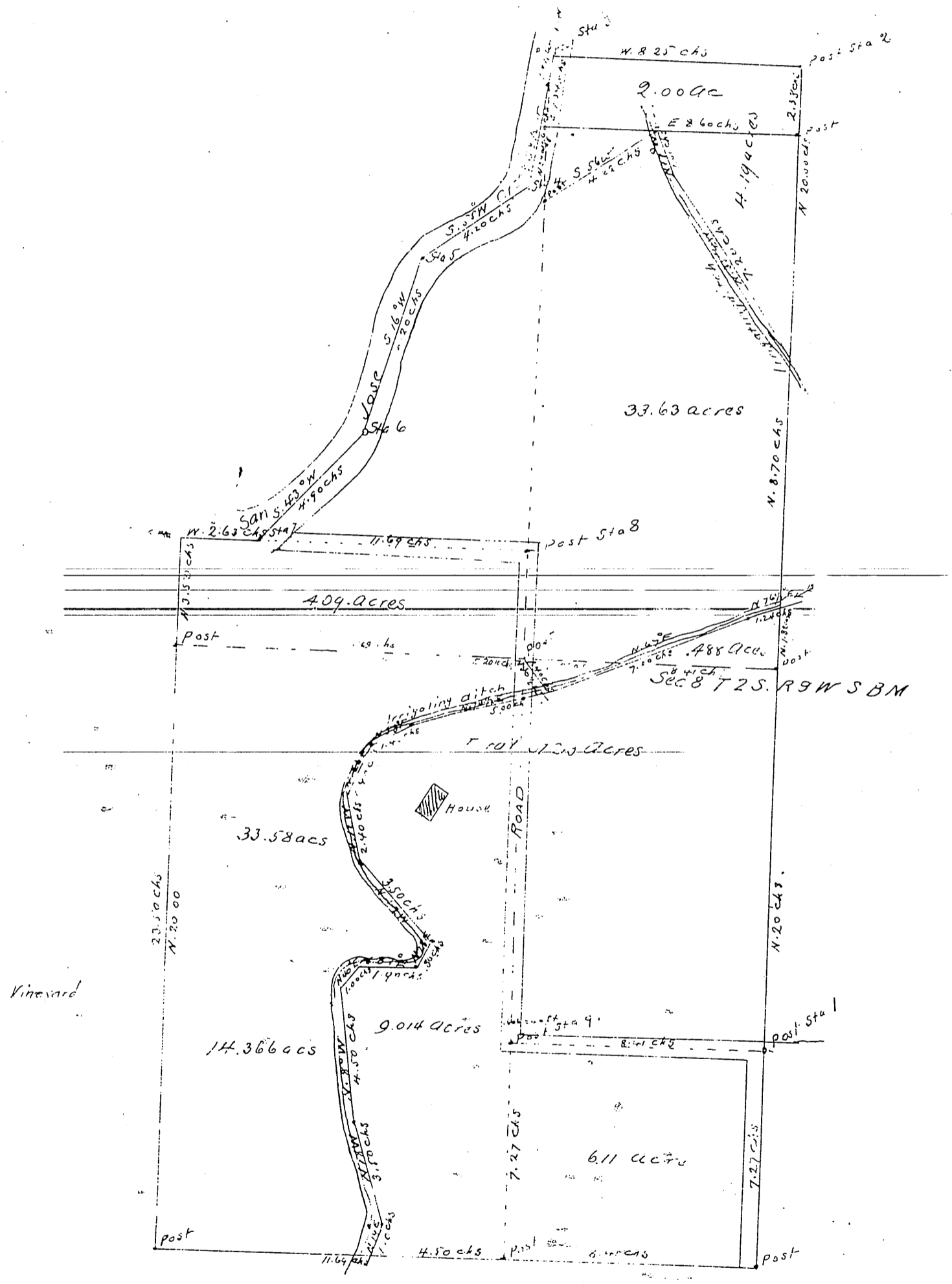


MR 7-1

MAP  
 OF PART OF  
 Fractional Section 8  
 T. 2 S. R. 9 W. S. B. M.  
 Scale 2 chains to 1 inch  
 Surveyed Sep. 1885  
 Jas. T. Taylor C.E.



A full true and correct copy of the original  
 reduced to the scale of 4 chains to one inch  
 recorded Sept 26<sup>th</sup> 1885 at 50 min pas-3 P.M. at  
 request of P.C. Tanner

Frank W. Gibson Com  
 by W.B. Trickerd