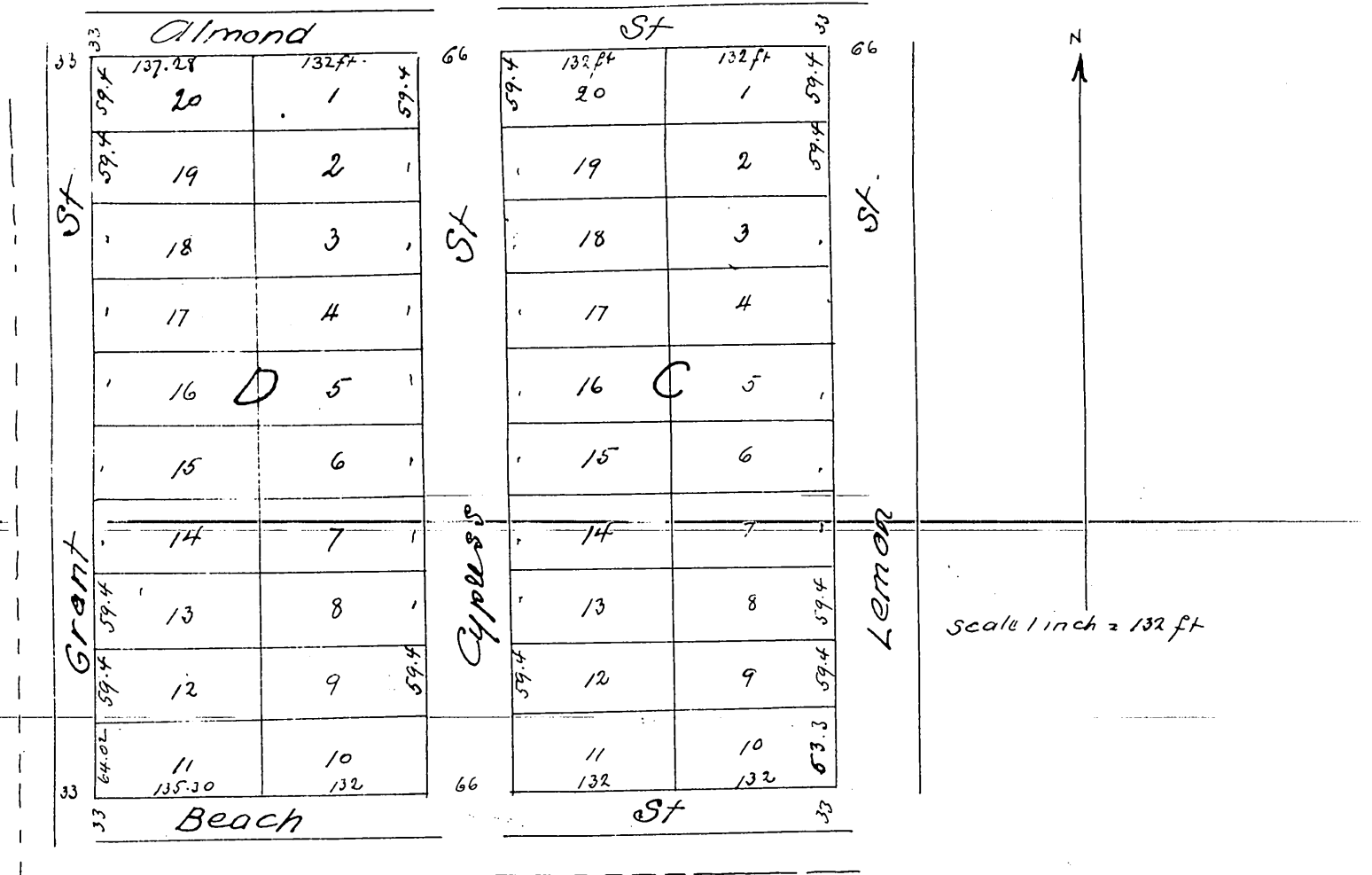


MR 7-4

4

PLAT
 OF
 Subdivision of Blocks C, D, E & F
 of
 Beach's Addition to Orange
 as surveyed by me for.

Joseph Beach
 in October 1885
 John T. Hallett
 Civ. Engr.



A full true and correct copy of the original
 recorded Oct 17th 1885 at 5 min past 2 P.M.
 at request of Joseph Beach
 Frank A. Gibson County Recorder
 by W. B. Pickard Deputy