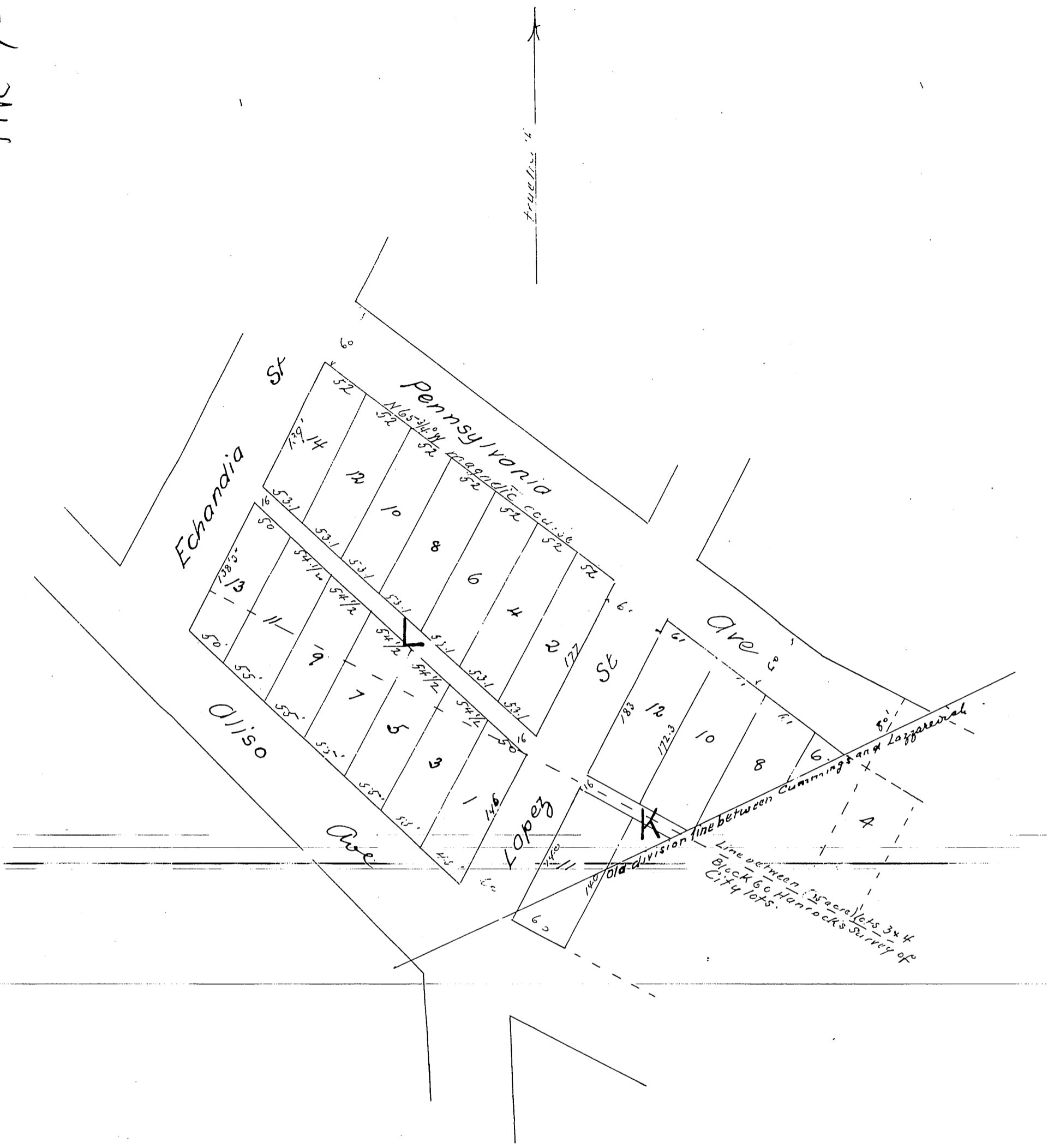


MR 7-9



Map of the subdivision of portions of
 (35 acre) Lots 3 and 4 Block 60 Han-
 cocks Survey Los Angeles City California
 Surveyed October 1885 by M. Kelleher Sur
 Scale one inch equal 100 feet Being
 a resubdivision and modification of Sub-
 blocks K and L
 Reference being had to book 3 pages
 54 & 55 and page 597 Miscellaneous
 Records of Los Angeles County California

a full true and correct copy of the original
 recorded October 30th 1885 at 54 min past 3 P.M.
 at request of Geo Cummings
 Frank A. Gibson County Recorder
 by W.B. Prichard Deputy