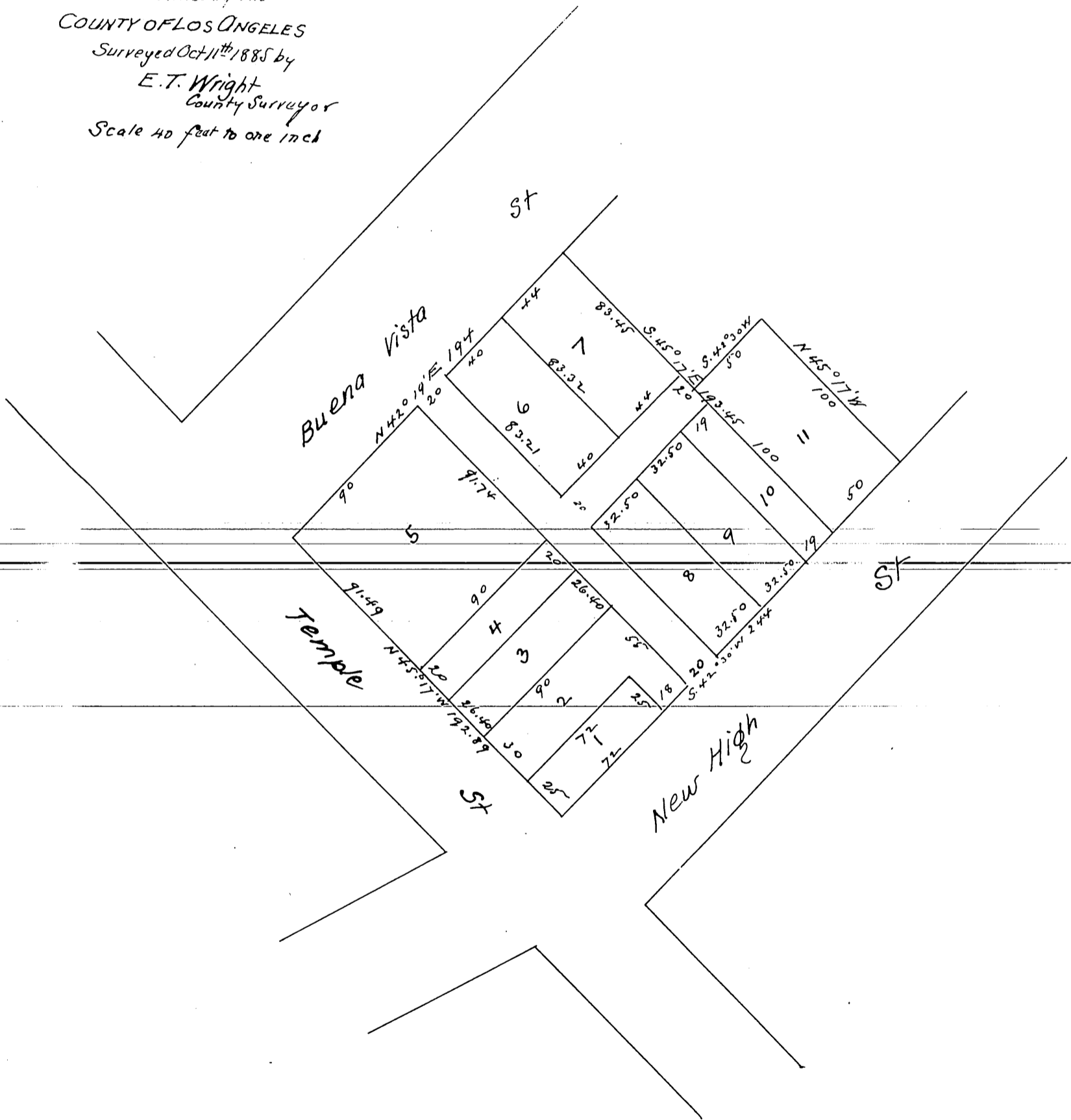


MR 7-11

Map
 of
 D. G. Stephens Tract
 in
 Los Angeles City
 owned by the
 COUNTY OF LOS ANGELES
 Surveyed Oct 11th 1885 by
 E. T. Wright
 County Surveyor
 Scale 40 feet to one inch



A full true and correct copy of the original
 reduced to scale of 60 feet to one inch recorded
 November 12th 1885 at 50 min past 10 A.M. at
 request of Board of Supervisors of L.A. County

Frank A. Gilton County Recorder
 by H. B. Prichard Deputy