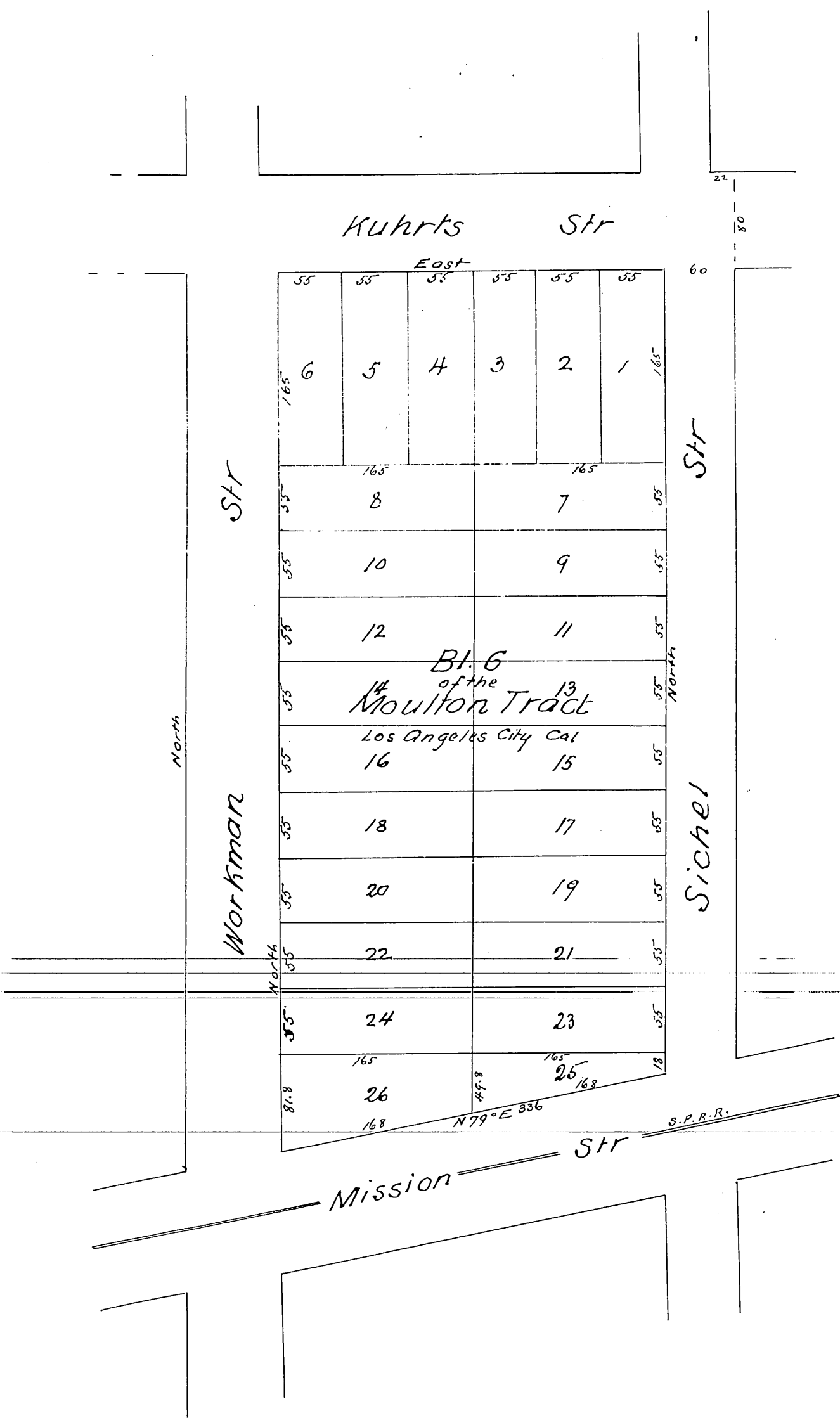


MR 7-12



Surveyed at the request of G. D. Rowan  
 by Hansen & Solano Sept 26 1885  
 Scale of one inch to 60 feet  
 true courses Variation 15' East

A full true and correct copy of the original  
 reduced to scale of 100 feet to one inch  
 recorded Nov 16<sup>th</sup> 1885 at 26 min past 4 p.m.  
 at request of Lanfershim & Rowan  
 Frank A. Gibson County Recorder  
 by W. B. Orickard Deputy