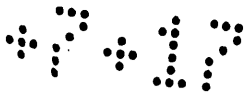


MR 7-16



MR 7-17



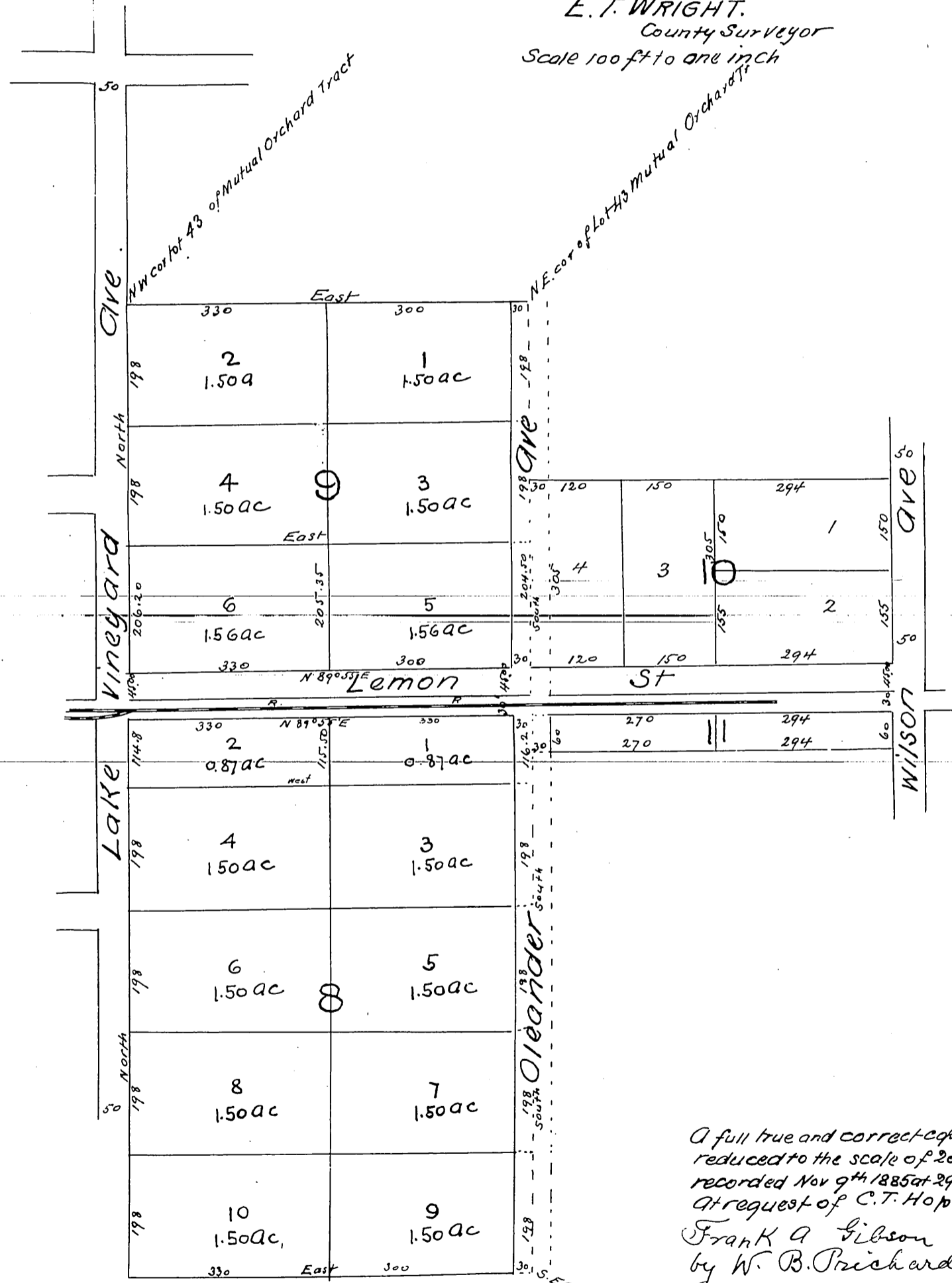
# MAP OF OLIVE WOOD

The property of  
C. T. HOPKINS

Streets located in Aug. 1885  
by

E. T. WRIGHT,  
County Surveyor

Scale 100 ft to one inch



A full true and correct copy of the original  
reduced to the scale of 200 ft to one inch  
recorded Nov 9<sup>th</sup> 1885 at 29 min past 1 P.M.  
at request of C. T. Hopkins  
Frank A. Gibson County Recorder  
by W. B. Prichard Deputy

SE. Cor of lot 36 of Mutual Orchard Tract.