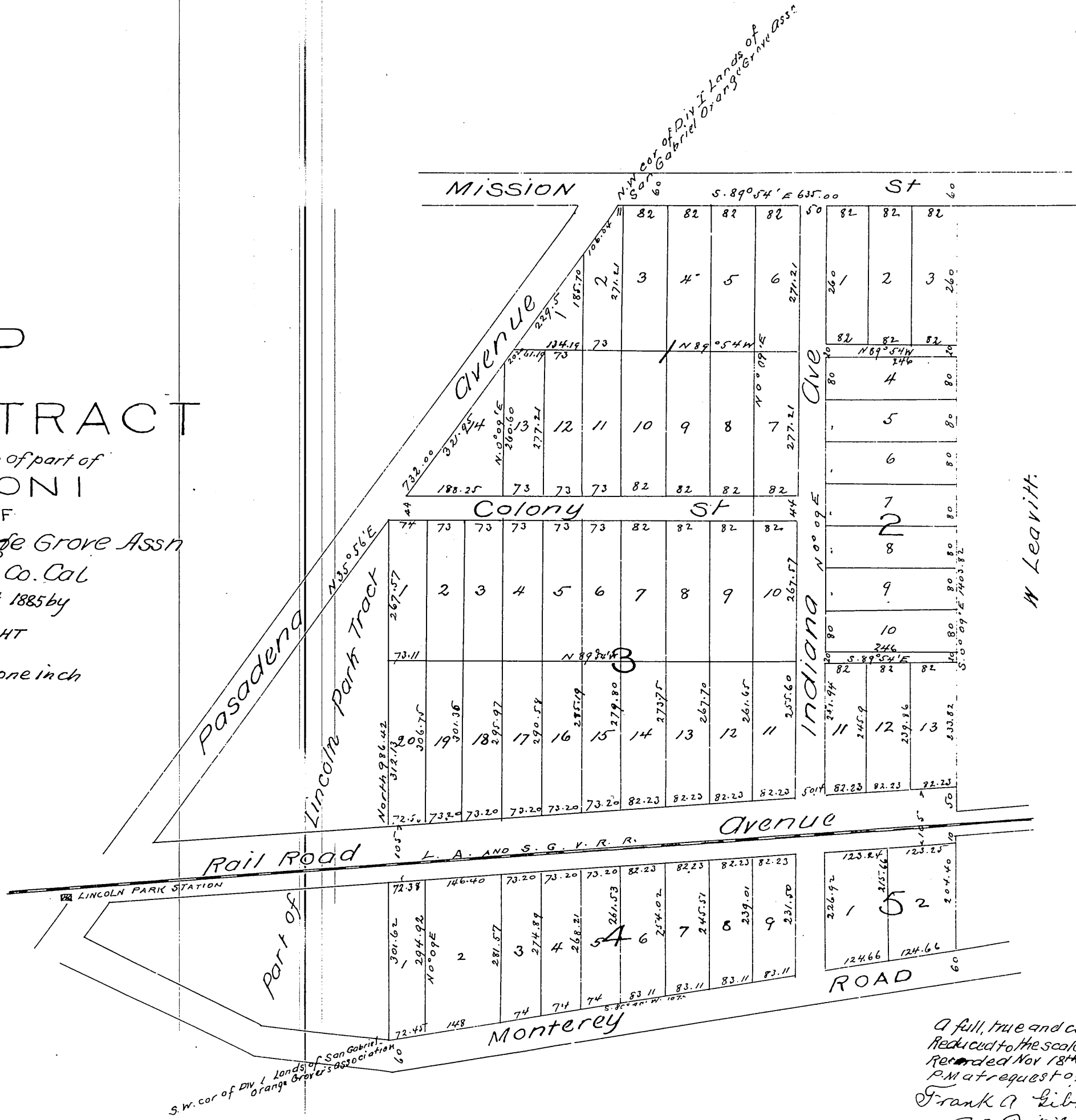


# MAP of the VAWTER TRACT

being subdivision of part of  
DIVISION I  
LANDS OF  
San Gabriel Orange Grove Assn  
Los Angeles Co. Cal  
Surveyed Oct 1885 by  
E. T. WRIGHT

Scale 100 feet to one inch



A full, true and correct copy of the original  
Reduced to the scale of 200 feet to one inch  
Recorded Nov 18<sup>th</sup> 1885 at 12 min past 2  
P.M. at request of E. J. Vawter  
Frank A. Gibson County Recorder  
W. B. Pritchard, Deputy