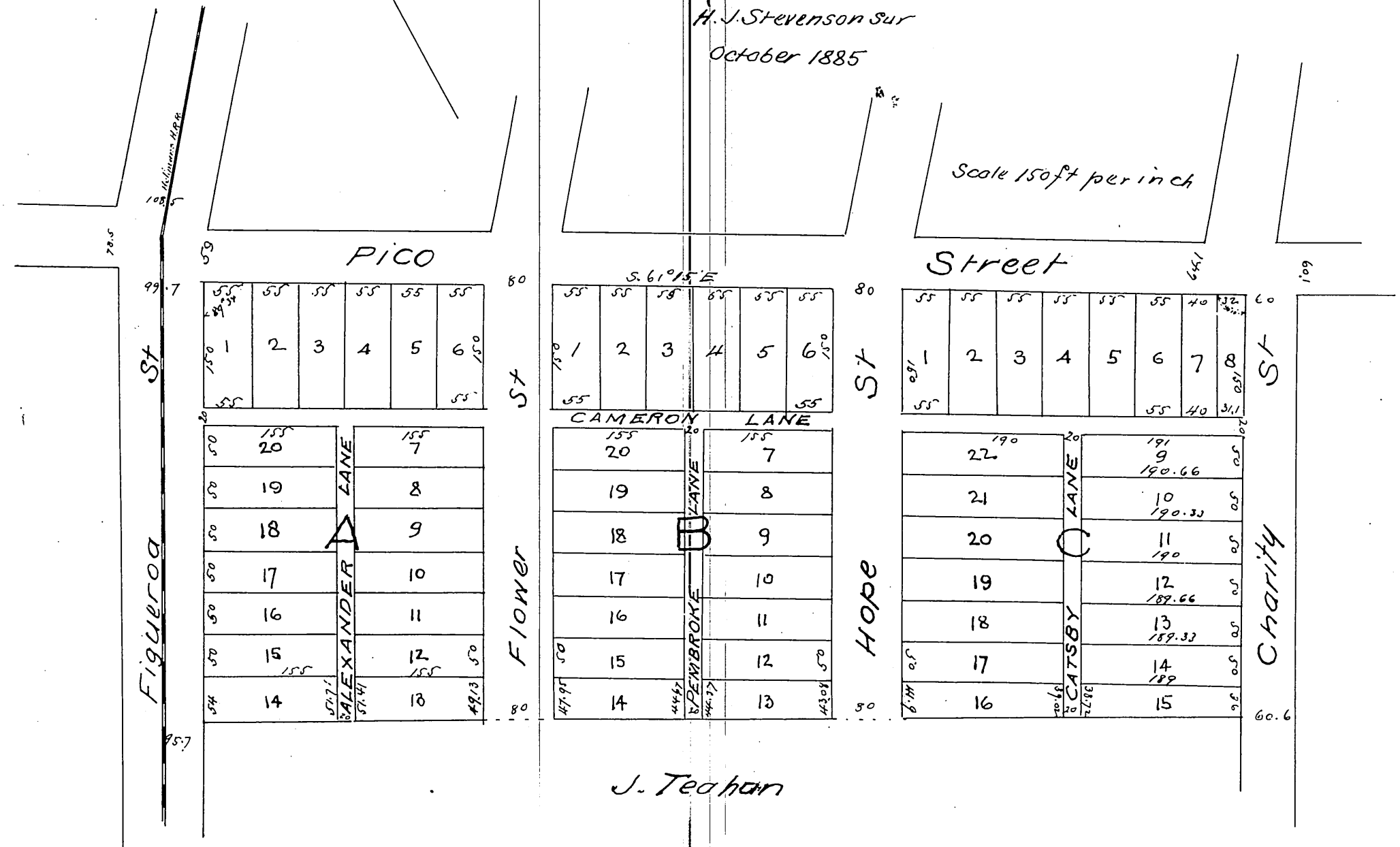


MAP of the Cameron Tract

Los Angeles
Los Angeles Co. Cal

H. J. Stevenson Sur
October 1885

Scale 150ft per inch



J. Teahan

A full true and correct copy of the original
reduced to the scale of 150 feet to one inch
recorded Nov 23rd 1885 at 30 min past 10 AM
at request of C. E. Thom
Frank A. Gibson County Recorder
by W. B. Prichard Deputy