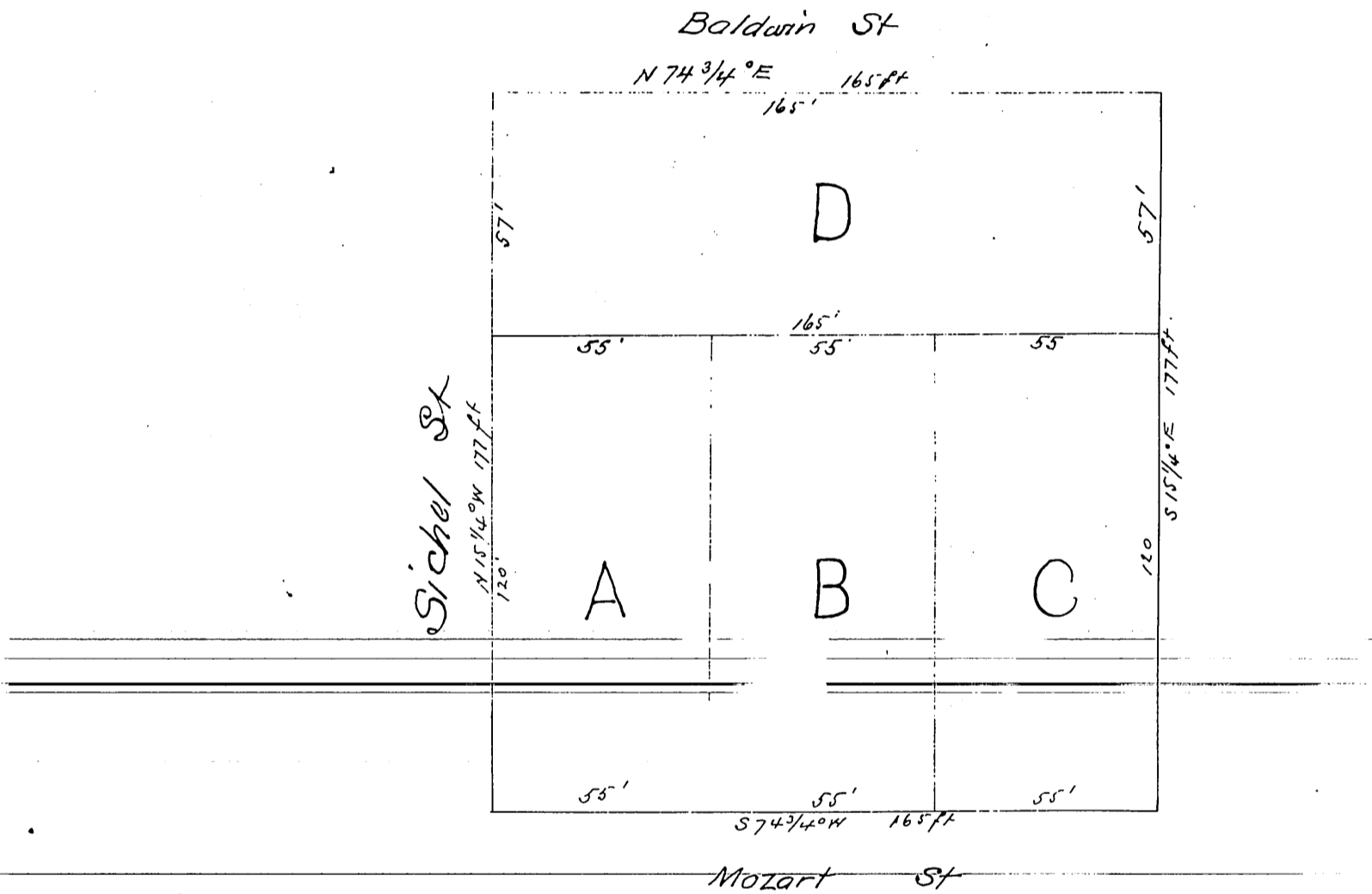


MR 7-22

Los Angeles Cal }
 August 14th 1884 }
 Survey of L. J. Rose's subdivision
 of Lot 7 of Griffins Resubd Thirty acre Tract in
 East Los Angeles Cal.



Scale 40 ft - 1 inch

John E Jackson
Surveyor

A full true and correct copy of the original
 Recorded November 18th 1885 at 42 min past 12 M
 at request of J. V. Wachtel

Frank A. Gibson
 by W. B. Prichard

County Recorder
 Deputy