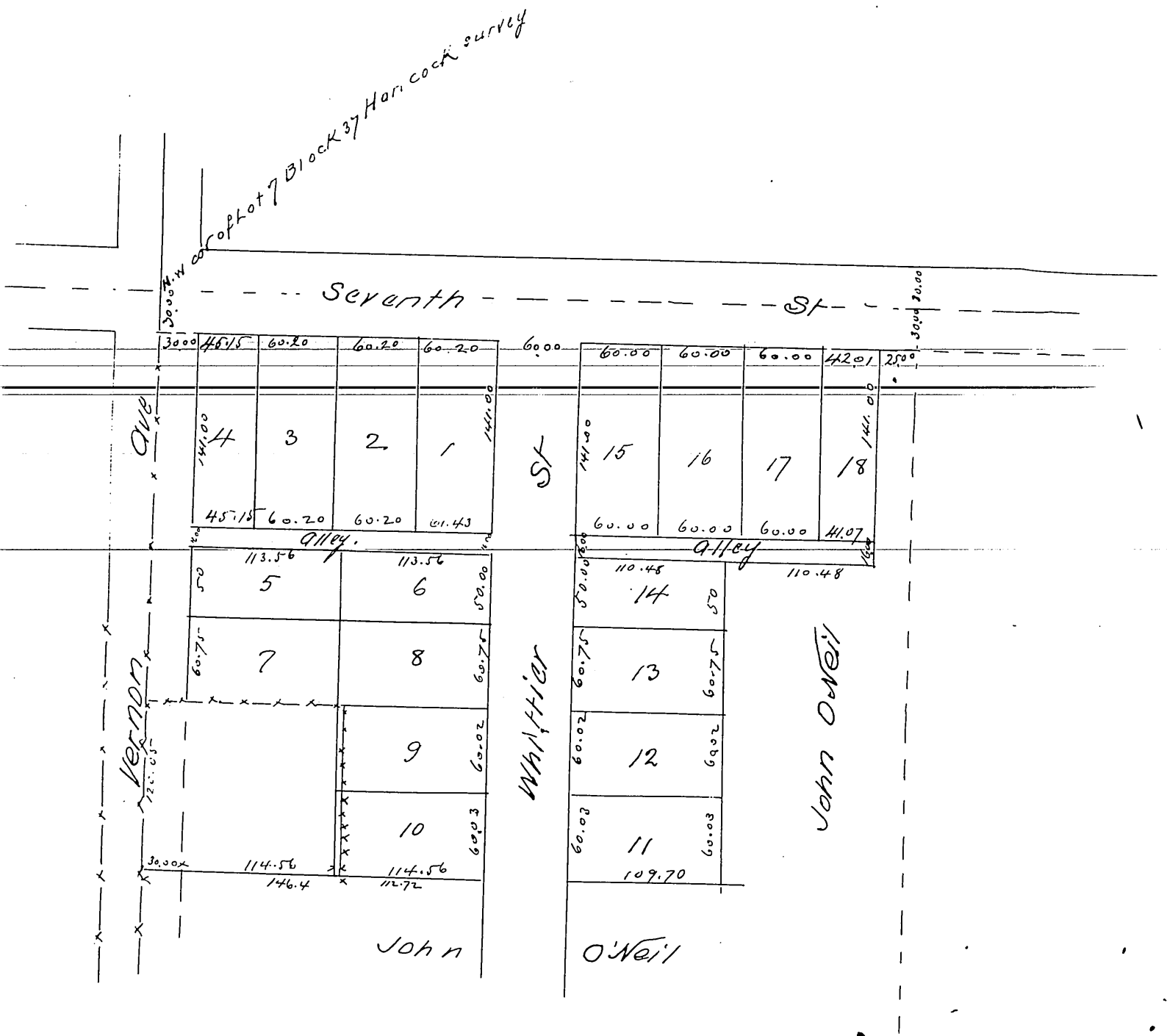


MR-7-24

Plat
of
O'Neil's Subdn of the North Westerly
part of
Lot 7 Block 37, Hancock's Surv.
subdivided
in Nov 1885 at the request of
John O'Neil
under direction of Geo. Knox

Scale 50 ft to one inch



Note
Fences - x - x - x - x

A full true and correct copy of the original
reduced to the scale of 100 ft per inch
recorded Nov 18th 1885 at 35 min past 2
P.M at request of John O'Neil
Frank A Gibson County Recorder
by W. B. Prichard Deputy