

Mr. Beach

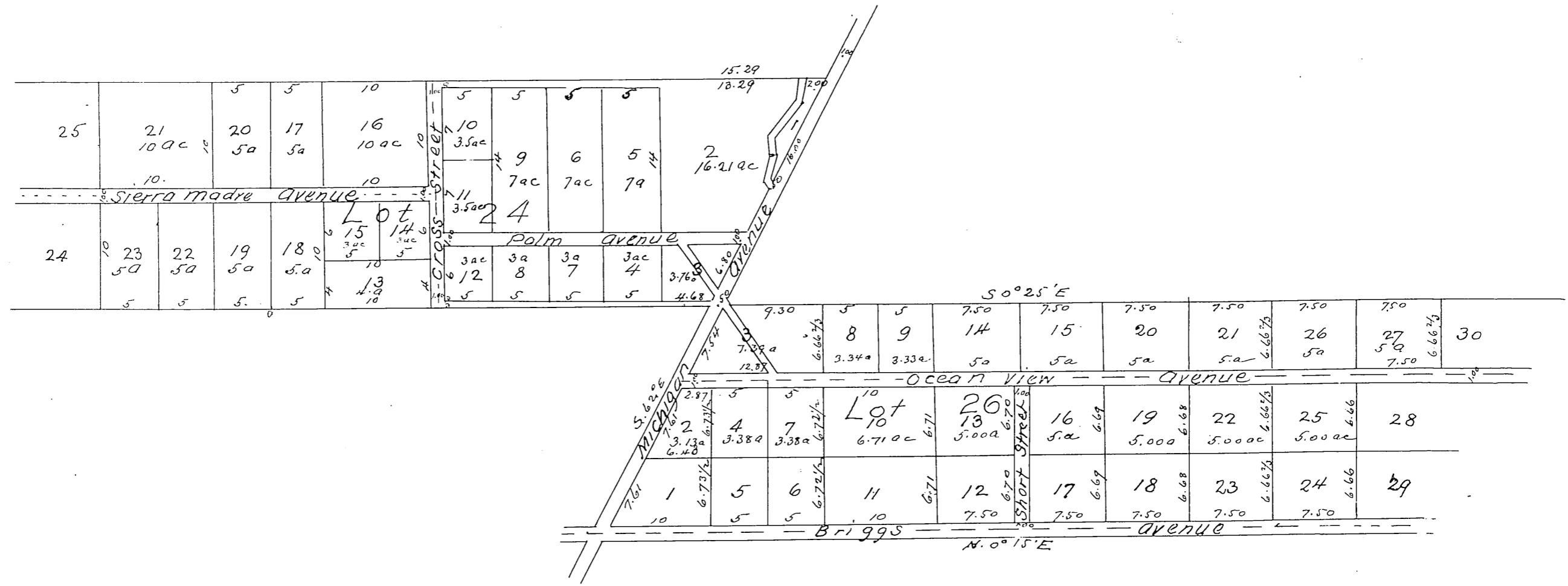
Map OF

Beach's Addition to Crescenta Cañada. being a Subdivision of Lots 24 and 26

LOS ANGELES CO CAL

H. J. STEVENSON SUR April 1885

SCALE 10 CHS PER INCH



A full true and correct copy of the original recorded November 27th 1885
at 32 min past 11 am at request of Mr Beach

Frank A. Gibson County Recorder
by W. B. Prichard Deputy