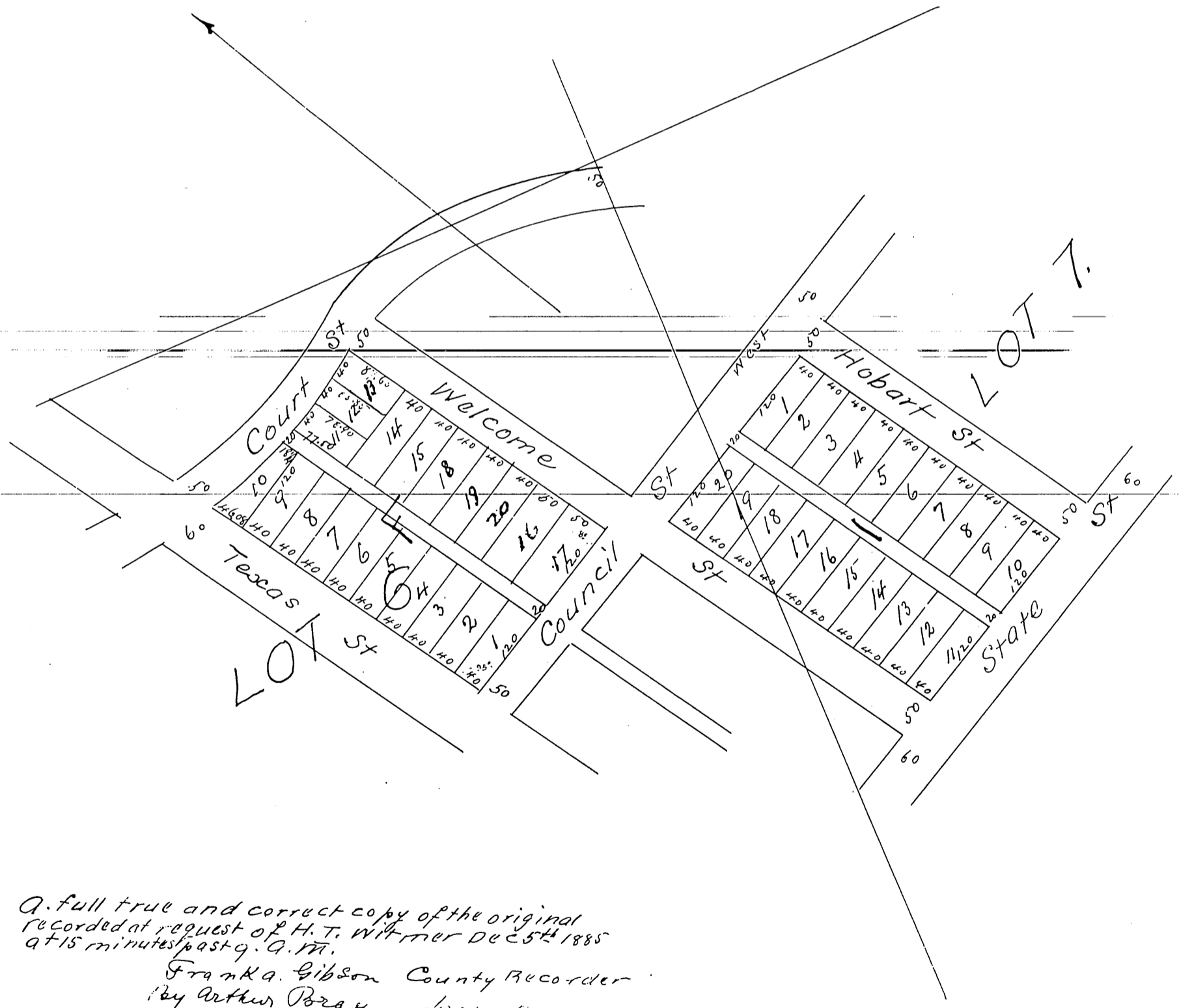


MR 7-28

MAP
of the
LOS ANGELES IMPROVEMENT COMPANY'S
Subdivision of parts of Lots 6 & 7 Block
39 Hancock's Survey
Scale 150 feet per inch
Surveyed June 1885 by
Ruxton and McClure



A full true and correct copy of the original
recorded at request of H. T. Wilmer Dec 25th 1885
at 15 minutes past 9. A.M.
Frank A. Gibson County Recorder
by Arthur Boray deputy.