

MR 7-29

# MAP

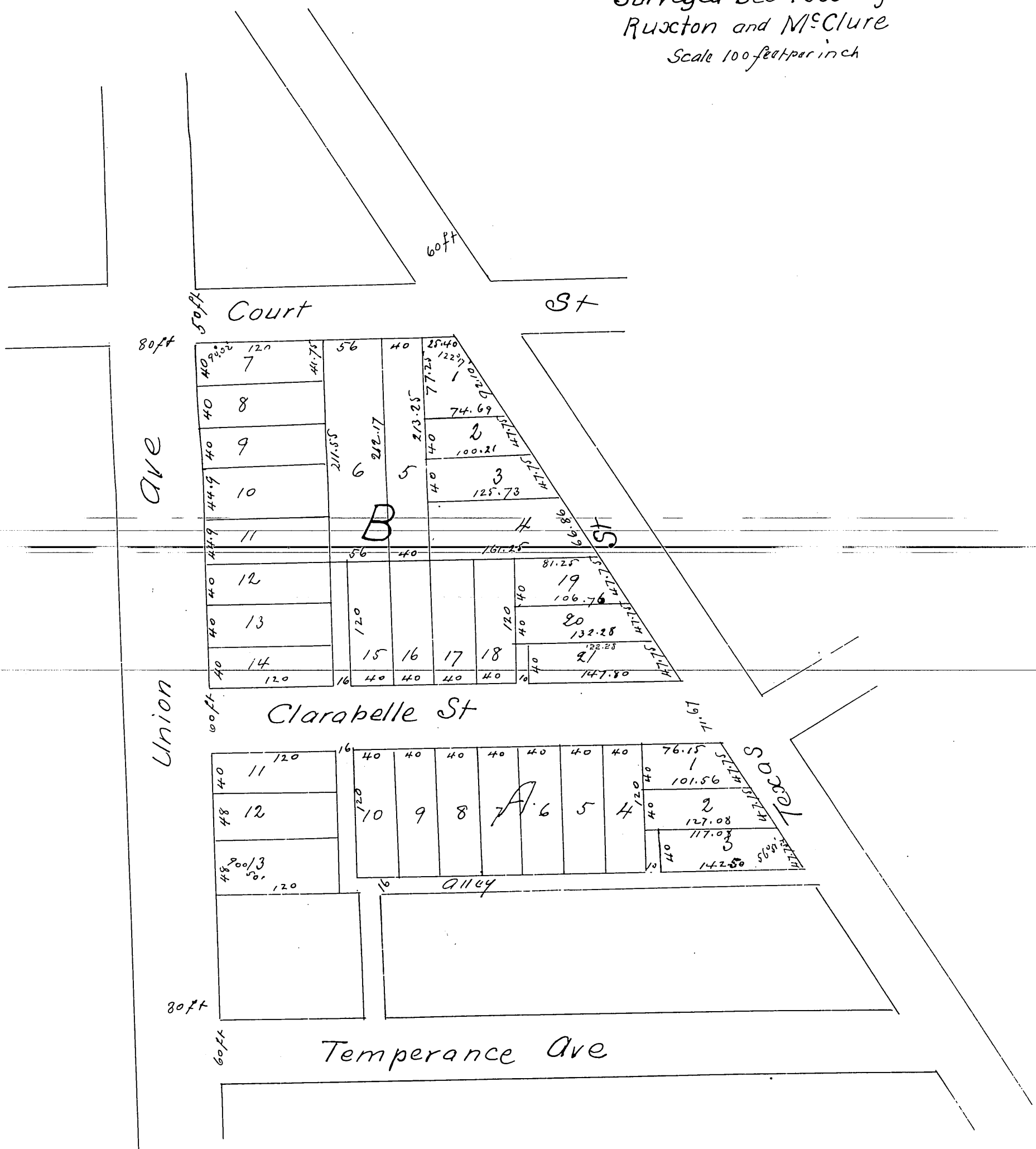
OF THE

## CLARABELLE TRACT

being a subdivision of part of  
LOT 6 BLOCK 39 HANCOCKS SURVEY.

Surveyed Dec 1885 by  
Ruxton and McClure

Scale 100 feet per inch



A full true and correct copy of the original  
recorded at request of James Booth Dec 5th 1885  
at 35 minutes past 9 A.M.

Frank A. Gibson County Recorder  
By Arthur Bray Deputy.