

MR-7-30

Plat
of
Lyman Allen's Subdivision
of.

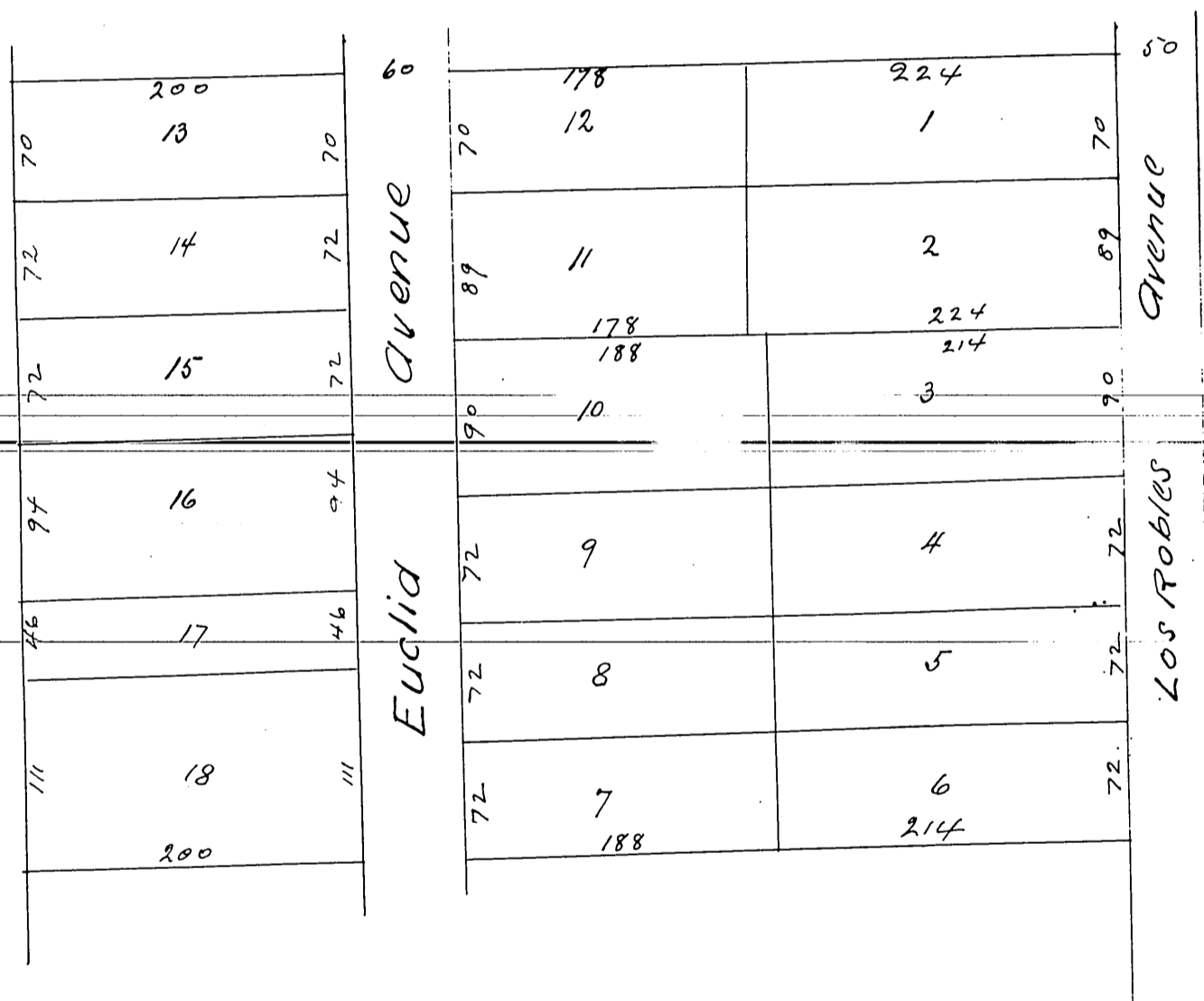
The North part of Lot 6. Block G

SAN PASCUAL TRACT

Pasadena Los Angeles Co. Cal.

Williell Thomson Sur

Scale 100ft to 1 inch



A full true and correct copy of the original recorded 28th November 1885
at 34 minutes past 11 a.m. at request of Lyman Allen

Frank Gibson County Recorder
By W S Averill Deputy