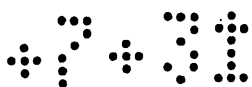


MR 7-31



Tracing
from
Map showing Subdivision
of Lot '10' Block 'C'

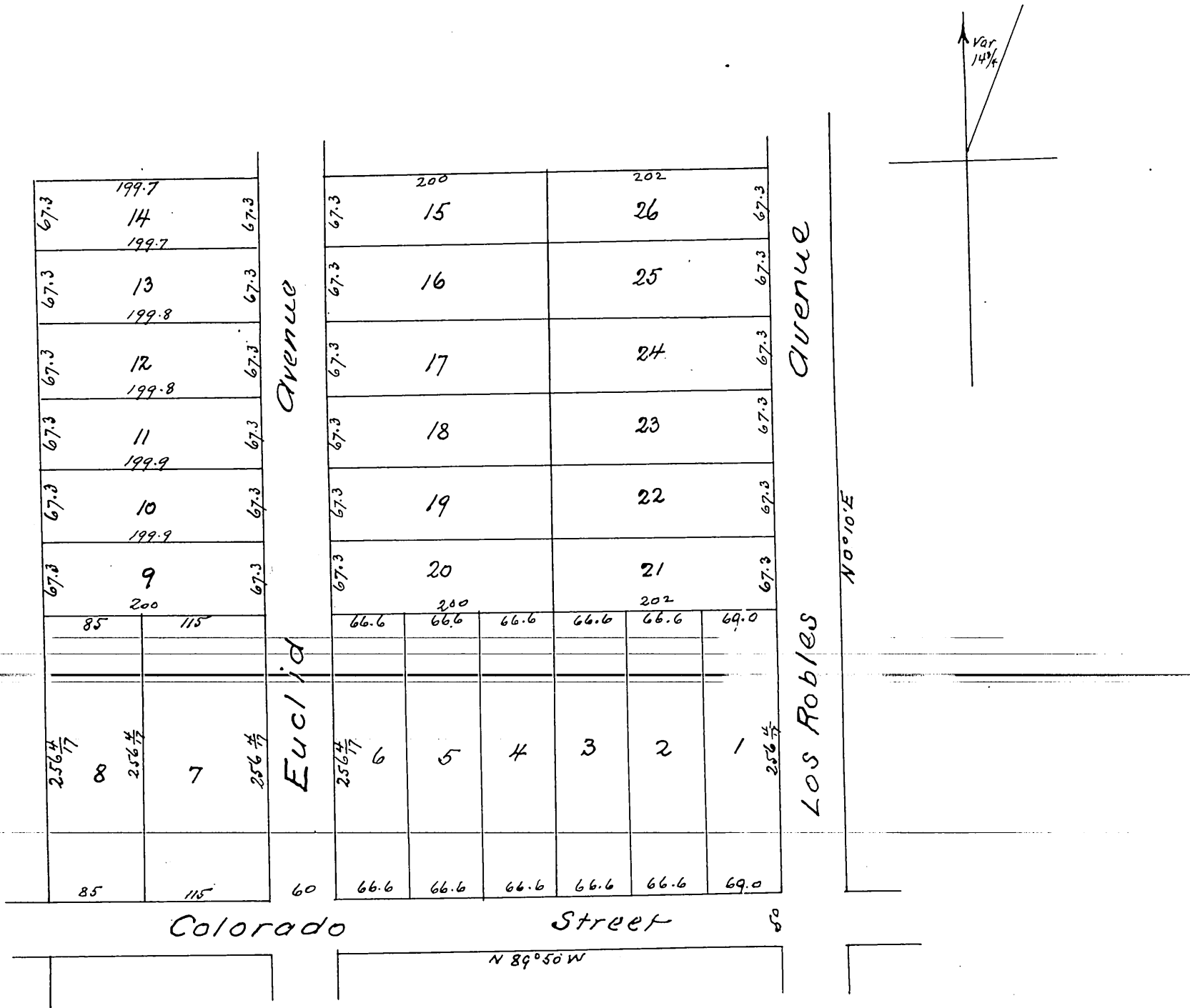
San Pasqual Tract

PASADENA CAL

Property of Geo E Meharry Surveyed in November 1885
by B. Bassell. C.E.

Scale 60 feet to inch

Reduced to 120 ft to 1 inch



A full true and correct copy of the original reduced to the scale
of 120 feet per inch recorded December 1st 1885 at 46 minutes past 10 A.M.
at request of: G. E. Meharry

Frank A. Gibson County Recorder
By N. S. Averill Deputy.