

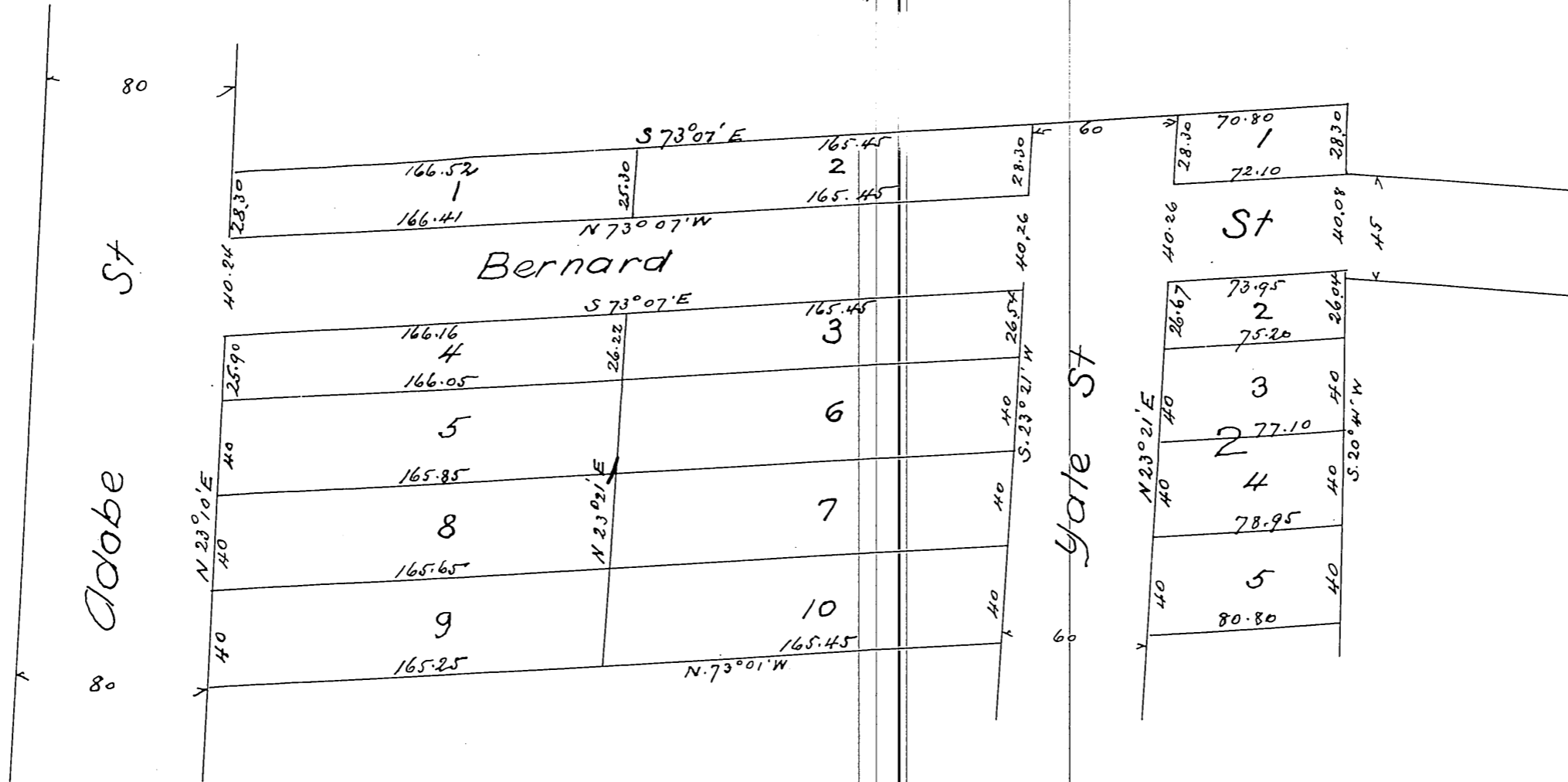
MAP
of
Blocks 1 & 2 West Depot Tract
Recorded in Book 6 page 432 Misc Records
with changes made at request of

Surveyed Dec 1885

J. Brousseau

Scale 60ft to one inch

by E.T. Wright
Co Surveyor



A full true, ^{and} correct copy of the original recorded December 23rd 1885
at 11 min past 3 pm at request of J. Brousseau
Frank A. Gibson County Recorder
by W. B. Prichard Deputy