

MAP OF COLINA PARK

LOS ANGELES CITY, CAL

Survey completed in November 1884

by

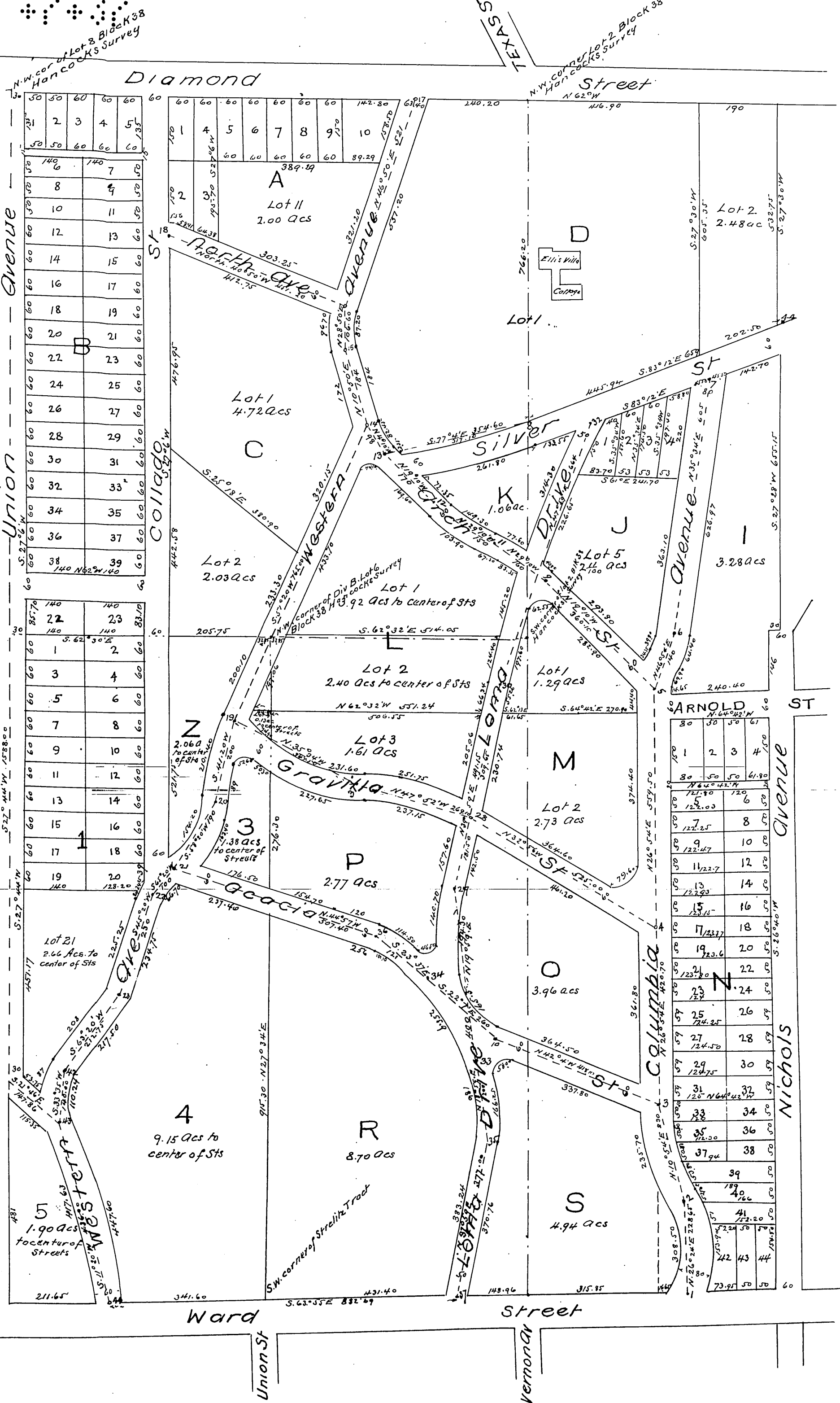
E. T. Wright

Scale 100 feet to one inch

*A full true and correct copy of the original
reduced to the scale of 200 feet to one inch
recorded November 28th 1885 at 45 min past 3 P. M.
at request of W. J. Bradshaw Mrs M. A. Hoadley, J. W. Ellis
W. A. Boring, N. W. Stowell and H. C. Witmer*

*Frank A. Gibson County Surveyor
by W. B. Prichard Deputy.*

MR-7-37



50	50	60	60	60
2	3	4	5	5
50	50	60	60	60
140	140	7	8	50
50	50	10	11	50
60	60	12	13	60
60	60	14	15	60
60	60	16	17	60
60	60	18	19	60
60	60	20	21	60
60	60	22	23	60
60	60	24	25	60
60	60	26	27	60
60	60	28	29	60
60	60	30	31	60
60	60	32	33	60
60	60	34	35	60
60	60	36	37	60
60	60	38	39	60

140	140
22	23
140	140
1	2
3	4
5	6
7	8
9	10
11	12
13	14
15	16
17	18
19	20

30	30	30	61
1	2	3	4
50	50	50	61.80
5	6	50	50
7	8	50	50
9	10	50	50
11	12	50	50
13	14	50	50
15	16	50	50
17	18	50	50
19	20	50	50
21	22	50	50
23	24	50	50
25	26	50	50
27	28	50	50
29	30	50	50
31	32	50	50
33	34	50	50
35	36	50	50
37	38	50	50
39	40	50	50
41	42	50	50
43	44	50	50
45	46	50	50
47	48	50	50
49	50	50	50