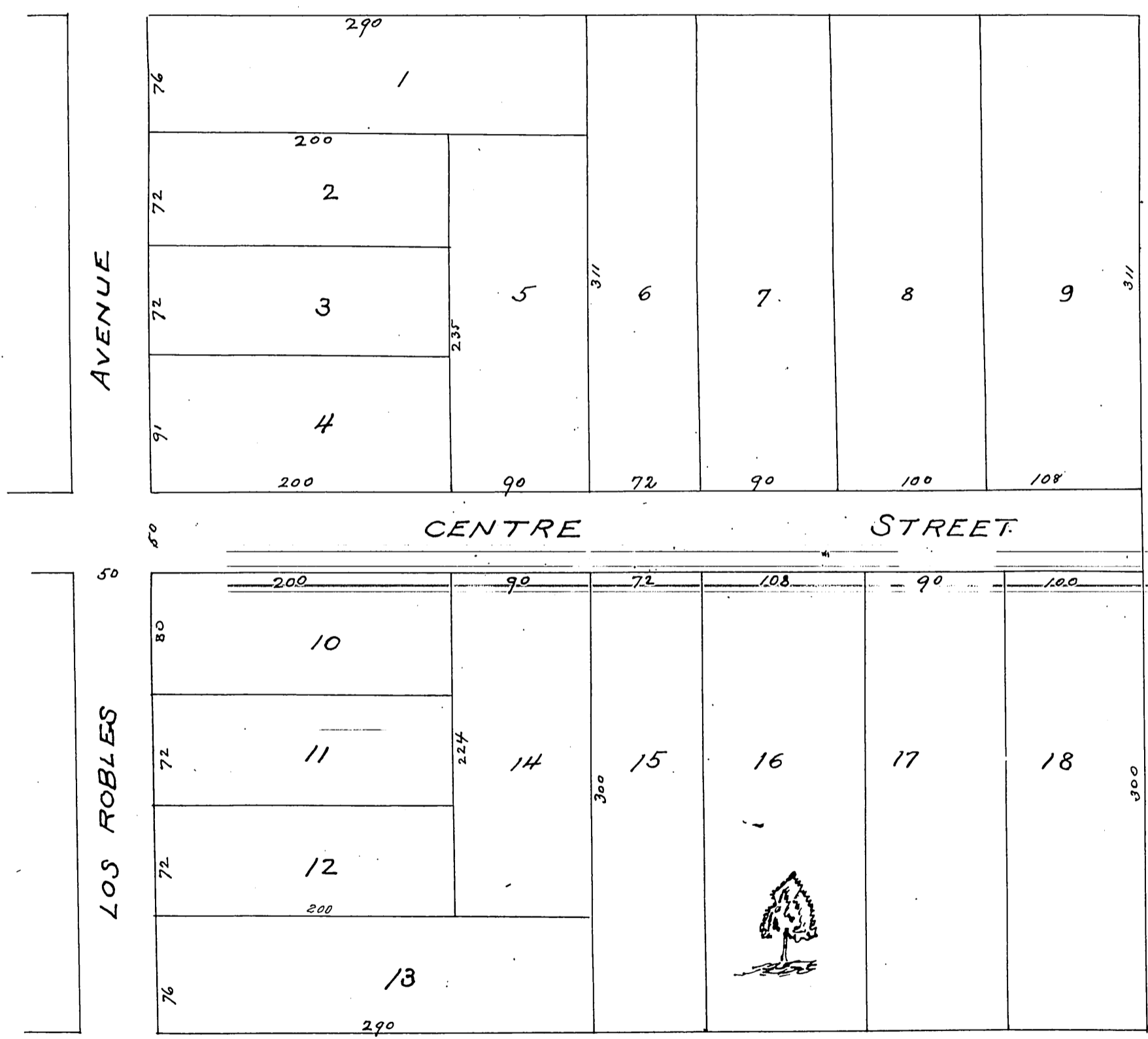


MR 7-39

# L.H. Bixby's Subdivision of

## Lot 8 Block J San Pasqual Tract Pasadena Los Angeles Co Cal

SURVEYED BY Williard Thomson October 1885 Scale 80 ft = 1 inch



A full true and correct copy of the original recorded 16<sup>th</sup> December 1885  
at 31 min past 1 P.M. at request of L.H. Bixby

Frank A Gibson County Recorder  
by W. B. Prichard Deputy