

MR 7-43

Map

of the

Los Angeles Improvement Co's Subdivision

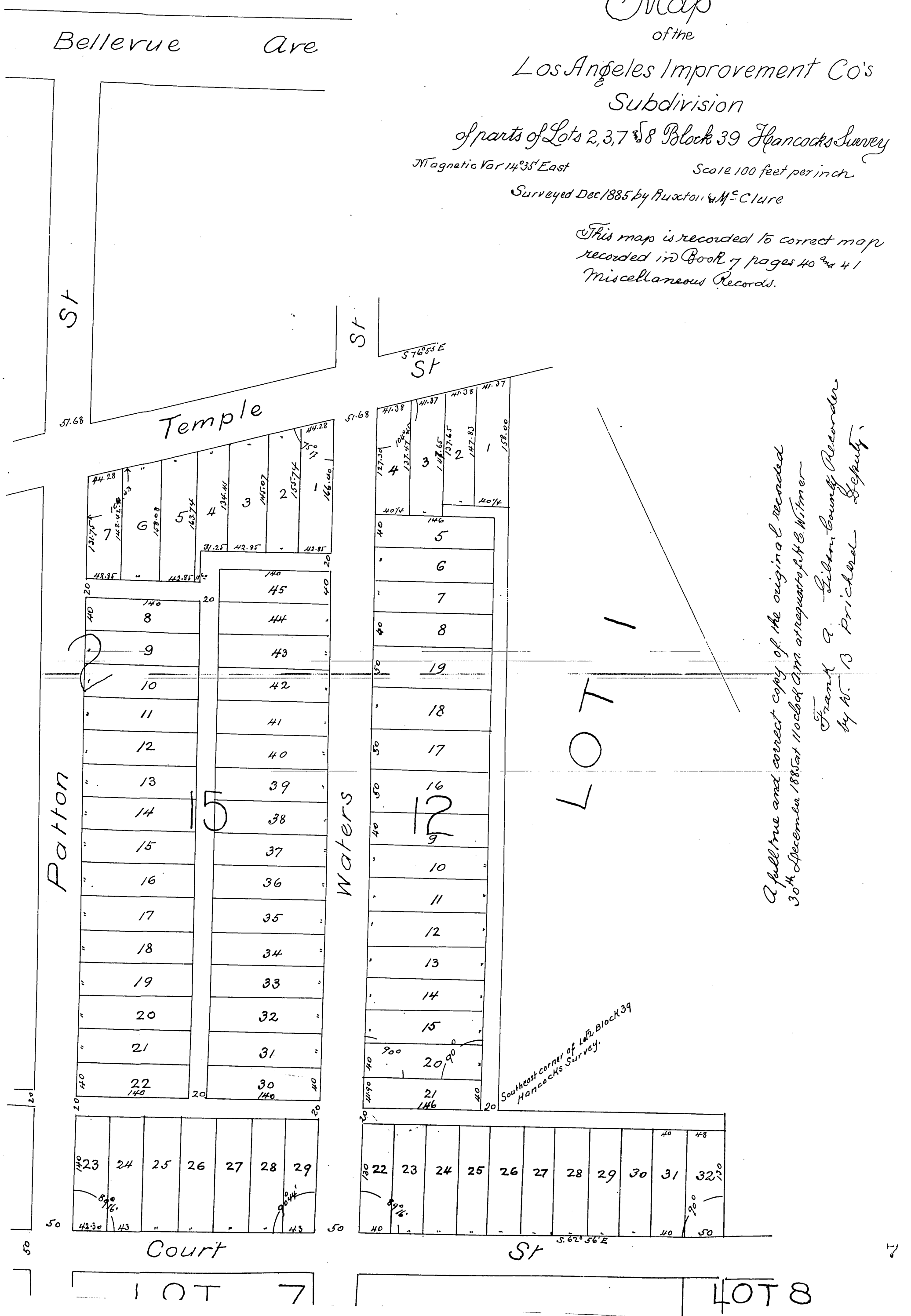
of parts of Lots 2, 3, 7 & 8 Block 39 Hancock's Survey

Magnetic Var 14° 35' East

Scale 100 feet per inch

Surveyed Dec 1885 by Ruxton & M^cClure

This map is recorded to correct maps
recorded in Book 7 pages 40 and 41
Miscellaneous Records.



A full true and correct copy of the original recorded
30th December 1885 at 11 o'clock A.M. at request of H. E. Wilmer
by Frank A. Gibson County Recorder
by W. B. Prichard Deputy.

Southeast corner of Lot 2, Block 39
Hancock's Survey.