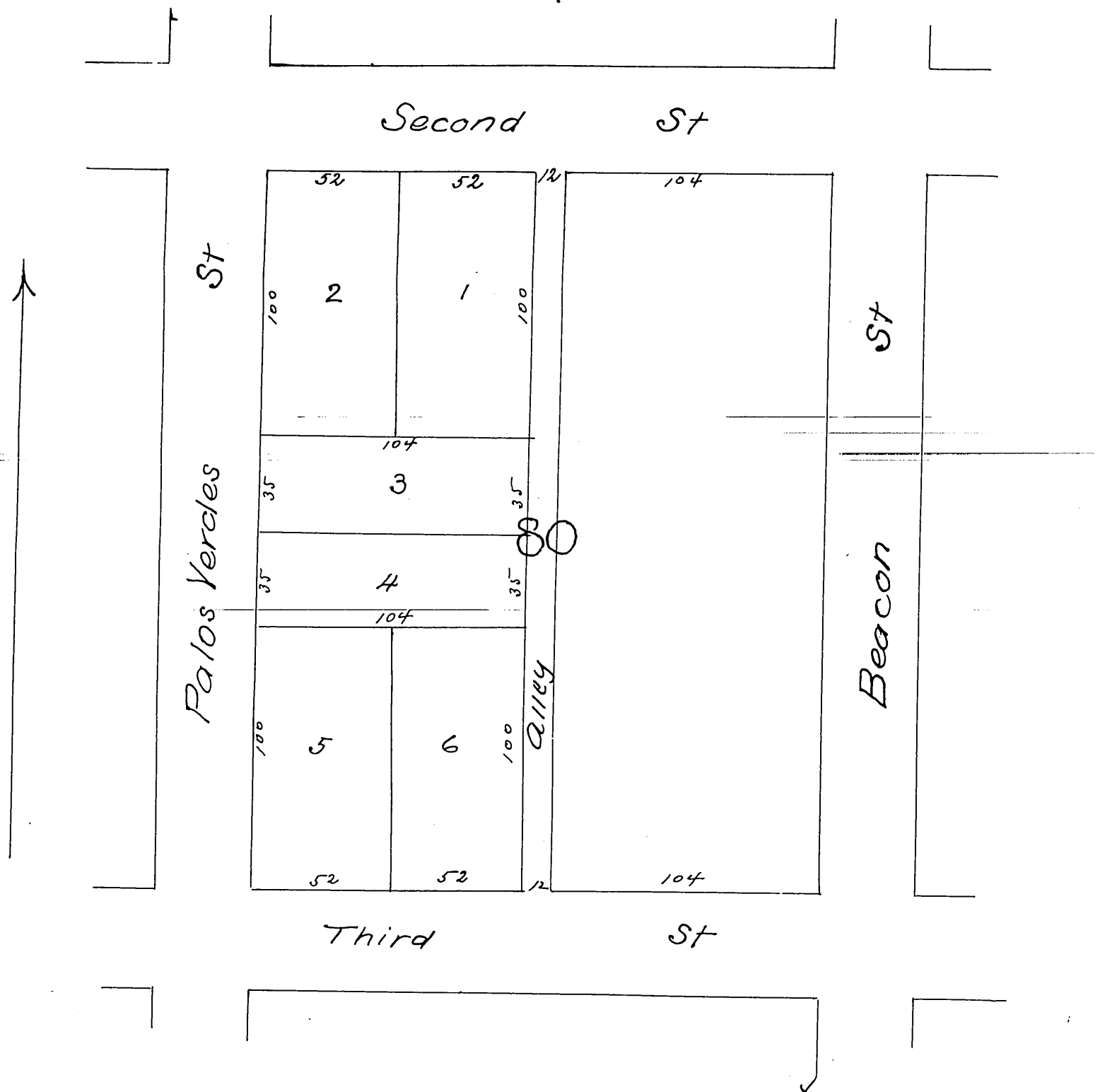


MR 7-44

Map  
of  
H. Hiller's Subdivision  
of  
the West half of Block 80  
TOWN OF SAN PEDRO

according (as to location of said Block) to Map filed in Sep 1882  
by Commissioners in partition of Rancho Palos Verdes



a full true and correct copy of the original recorded  
January 2<sup>nd</sup> 1886 at 10 am at request of H. Hiller

Frank A Gibson County Recorder  
by W. B Prichard Deputy