

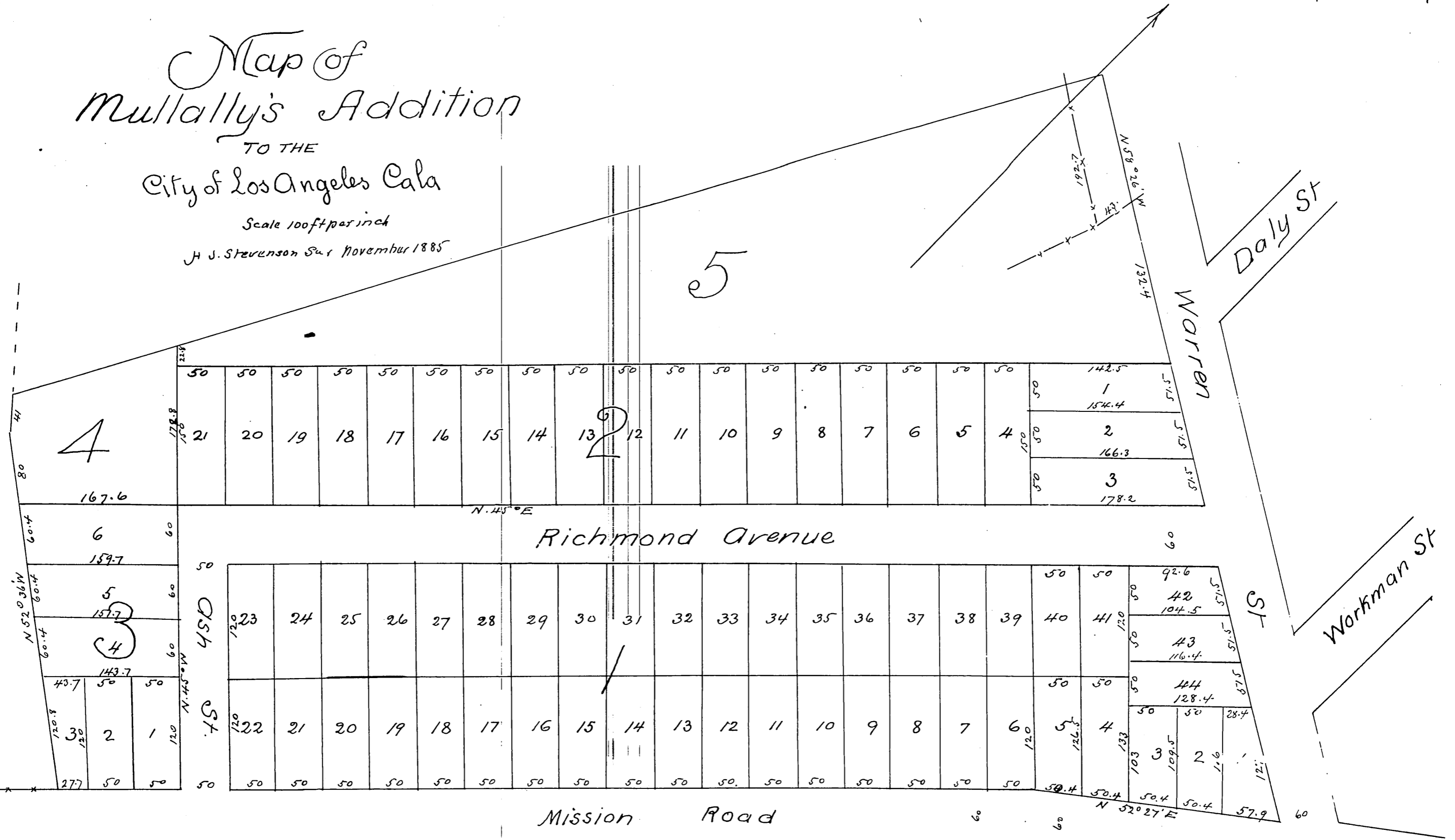
# Map of Mullally's Addition

TO THE  
City of Los Angeles Cala

Scale 100ft per inch

J. J. Stevenson Sur November 1885

5



A full true and correct copy of the original recorded December 30<sup>th</sup> 1885  
at 30 min past 4 P.M. at request of *Huff*

Frank A. Gibson  
by W. B. Prichard

County Recorder  
Deputy.