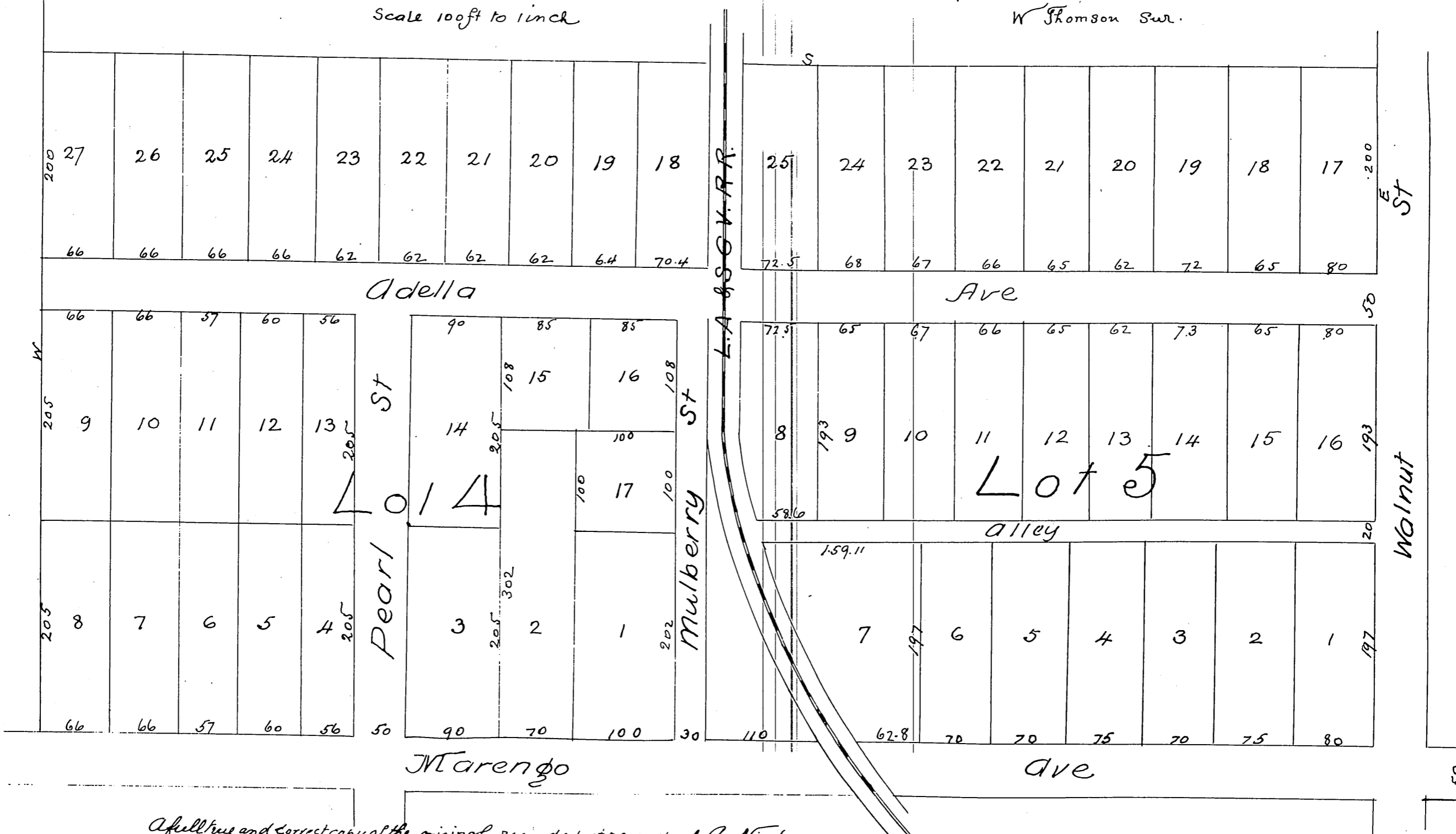


Plat  
of  
A. Ninde's Subdivision  
of  
Lots 4 and 5 Block 6 San Pascual Tract  
Pasadena Cal.

Scale 100ft to 1inch

W Thomson Sur.



A full true and correct copy of the original recorded at request of A. Ninde  
11th January 1886 at 50 mins past 1 P.M.  
Frank A. Gilton County Recorder  
By W. S. Averill Deputy.