

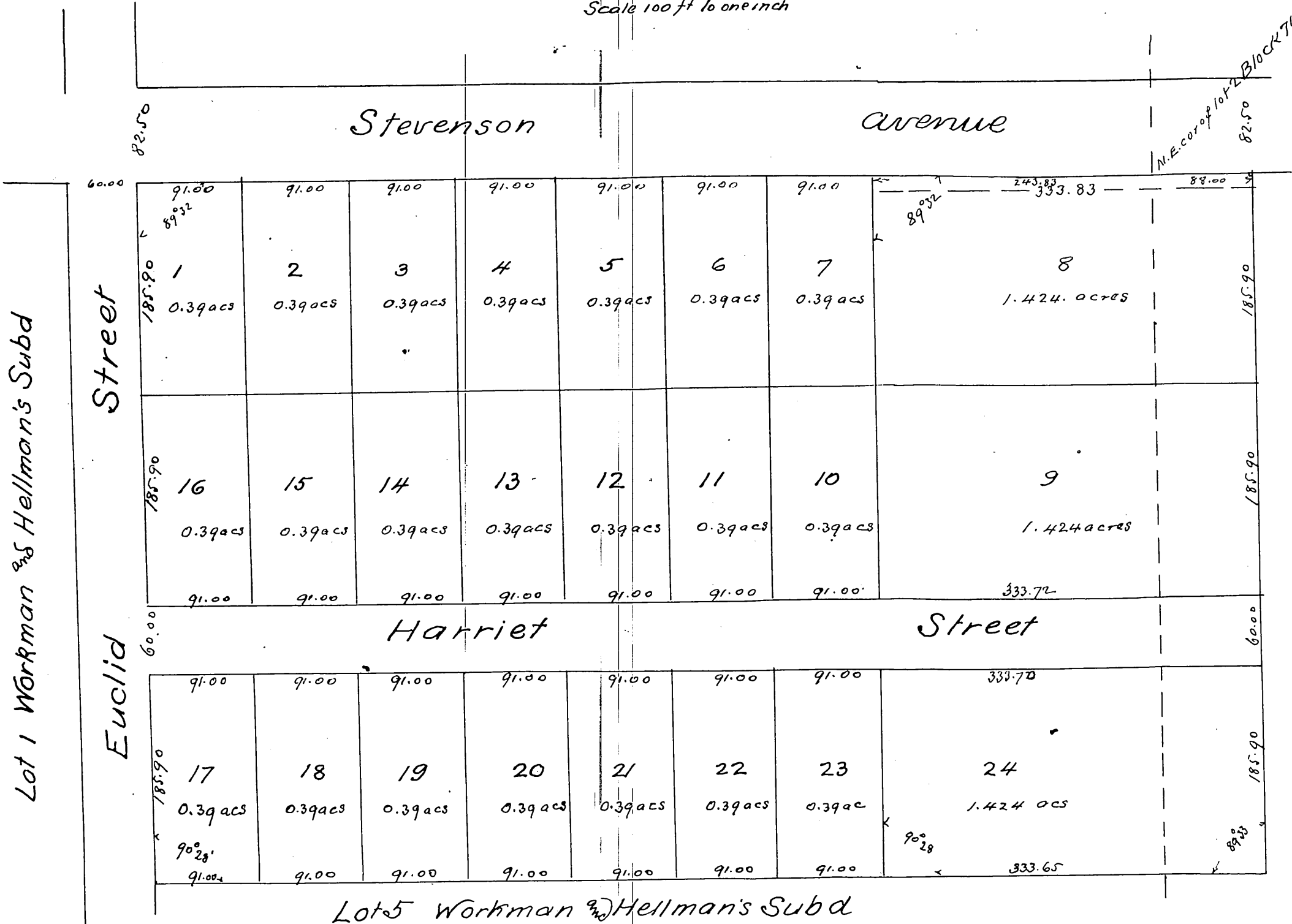
Plat
of the
Charmock Tract

City of Los Angeles

Subdivided at the request of C. Charmock in Oct 1885 by Geob Knox

Scale 100 ft to one inch

N.E. corner of 10 ft Block 71 Hancock's Survey.



Note The Subdivision herein shown comprises Lots 2, 3rd & 4th of Workman & Hellman's Subdivision of Lot 2nd part of Lot 1 Block 71 Hancock's Survey

A full true and correct copy of the original recorded January 11th 1886 at 5 min's past 4 P.M. at request of C. Charmock Frank A. Gilson County Recorder By W. B. Prichard Deputy